



Department of Public Works  
**Engineering Division**  
Jim Wolfe, City Engineer  
City-County Building, Room 115  
210 Martin Luther King, Jr. Boulevard  
Madison, Wisconsin 53703  
Phone: (608) 266-4751  
Fax: (608) 264-9275  
[engineering@cityofmadison.com](mailto:engineering@cityofmadison.com)  
[www.cityofmadison.com/engineering](http://www.cityofmadison.com/engineering)

**Deputy City Engineer**  
Gregory T. Fries, P.E.  
**Principal Architect 2**  
Bryan Cooper, AIA  
**Principal Engineer 2**  
John S. Fahrney, P.E.  
Chris Petykowski, P.E.  
Janet Schmidt, P.E.  
**Principal Engineer 1**  
Christina M. Bachmann, P.E.  
Mark D. Moder, P.E.  
James M. Wolfe, P.E.  
**Financial Manager**  
Steven B. Danner-Rivers

February 6, 2024

NOTICE OF PLAN REVISION  
PLAN REVISION NO. 9  
CONTRACT NO. 8716

EAST-WEST BUS RAPID TRANSIT IMPROVEMENT

Revise and amend the contract document(s) for the above project as stated in this plan revision, otherwise, the original document shall remain in effect.

**SPECIFICATIONS:**

N/A

**PLANS:**

**REMOVE AND INSERT REVISED PLAN SHEETS AS NOTED BELOW.**

**Plan Set 1**

SHEET O-5 (REV 2/2/2024): Updated Milwaukee Street slopes.

SHEET CR8-E (REV 1/26/2024): Updated grading.

SHEET CR9-E (REV 1/26/2024): Updated grading.

SHEET CR10-E (REV 1/26/2024): Updated grading.

**Plan Set 2**

SHEET R12-E (REV 1/25/2024): Updated removal limits.

SHEET R13-E (REV 1/25/2024): Updated removal limits.

SHEET R14-E (REM 1/25/2024): Sheet removed.

SHEET P12-E (REV 1/25/2024): Updated construction limits.

SHEET P13-E (REV 1/25/2024): Updated construction limits.

SHEET P14-E (REM 1/25/2024): Sheet removed.

SHEET G12-E (REV 1/26/2024): Updated construction limits and grading.

SHEET G12A-E (NEW 1/26/2024): New point table sheet.

SHEET G13-E (REV 1/26/2024): Updated construction limits and grading.

SHEET G13A-E (REV 1/26/2024): Updated construction limits and grading.

SHEET G14-E (REM 1/26/2024): Sheet removed.

SHEET PD12-E (REM 1/26/2024): Sheet removed.

SHEET PD13-E (REM 1/26/2024): Sheet removed.

SHEET PD14-E (REM 1/26/2024): Sheet removed.

SHEET P31B-E (REV 1/26/2024): Storm Schedule updated based on Milwaukee St site plan updates.

SHEET P31E-E (REV 1/26/2024): Storm Schedule updated based on Milwaukee St site plan updates.

SHEET P47-E (REV 1/16/2024): Sanitary Sewer Schedule updated based on Milwaukee St site plan updates.

**Plan Set 5**

SHEET S32-A (REV 2/1/2024): Removed Conduit run.

**Plan Set 11**

SHEET MQ11-E (REV 1/31/2024): Revised quantities.

SHEET MQ-6L (REV 2/1/2024): Revised quantities.

SHEET MQ-OSS1 (REV 04/28/2023): Revised Overhead Signing Structures Quantity Table

**PROPOSAL:**

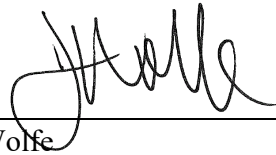
Summary of changes to the bid items and quantities are summarized in the table below.

<b>ACTION</b>	<b>ITEM NO.</b>	<b>DESCRIPTION</b>	<b>UNITS</b>	<b>QUANTITY CHANGE</b>
DECREASE QUANTITY	201.0120	Clearing	ID	-14
DECREASE QUANTITY	201.0220	Grubbing	ID	-14
DECREASE QUANTITY	204.0100	Removing Concrete Pavement	SY	-2,530
INCREASE QUANTITY	204.0150	Removing Curb & Gutter	LF	+107
DECREASE QUANTITY	204.0155	Removing Concrete Sidewalk	SY	-130
DECREASE QUANTITY	204.0220	Removing Inlets	EACH	-3

DECREASE QUANTITY	204.0245.01	Removing Storm Sewer - 12-Inch or Less	LF	-18
DECREASE QUANTITY	204.0245.03	Removing Storm Sewer - 18-Inch	LF	-149
DECREASE QUANTITY	205.0100	Excavation Common	CY	-30
DECREASE QUANTITY	305.0120	Base Aggregate Dense 1 1/4-Inch	TON	-86
DECREASE QUANTITY	305.0130	Base Aggregate Dense 3-Inch	TON	-96
DECREASE QUANTITY	405.0100	Coloring Concrete WisDOT Red	CY	-4
DECREASE QUANTITY	415.0100	Concrete Pavement 10-Inch	SY	-3,160
INCREASE QUANTITY	415.0110	Concrete Pavement 11-Inch	SY	+1,010
DECREASE QUANTITY	415.4100	Concrete Pavement Joint Filling	SY	-2,851
DECREASE QUANTITY	416.0170	Concrete Driveway 7-Inch	SY	-60
INCREASE QUANTITY	416.0610	Drilled Tie Bars	EACH	+195
DECREASE QUANTITY	416.0620	Drilled Dowel Bars	EACH	-77
INCREASE QUANTITY	520.8000	Concrete Collars for Pipe	EACH	+1
DECREASE QUANTITY	601.0205	Concrete Gutter 24-Inch	LF	-10
INCREASE QUANTITY	601.0409	Concrete Curb & Gutter 30-Inch Type A	LF	+152
DECREASE QUANTITY	601.0452	Concrete Curb & Gutter Integral 30-Inch Type D	LF	-520
INCREASE QUANTITY	601.0600	Concrete Curb Pedestrian	LF	+19
DECREASE QUANTITY	602.0410	Concrete Sidewalk 5-Inch	SF	-810
INCREASE QUANTITY	602.0420	Concrete Sidewalk 7-Inch	SF	+1,090
INCREASE QUANTITY	608.0312	Storm Sewer Pipe Reinforced Concrete Class III 12-Inch	LF	+123
DECREASE QUANTITY	608.0315	Storm Sewer Pipe Reinforced Concrete Class III 15-Inch	LF	-129
DECREASE QUANTITY	608.0318	Storm Sewer Pipe Reinforced Concrete Class III 18-Inch	LF	-149
DECREASE QUANTITY	611.0624	Inlet Covers Type H	EACH	-5
ADDED ITEM	611.0627	Inlet Covers Type HM	EACH	+1
DECREASE QUANTITY	611.3004	Inlets 4-FT Diameter	EACH	-5
INCREASE QUANTITY	611.3230	Inlets 2x3-FT	EACH	+1
DECREASE QUANTITY	611.8110	Adjusting Manhole Covers	EACH	-3

QUANTITY				
DECREASE QUANTITY	612.0106	Pipe Underdrain 6-Inch	LF	-50
DECREASE QUANTITY	620.0300	Concrete Median Sloped Nose	SF	-70
DECREASE QUANTITY	624.0100	Water	MGAL	-1.1
DECREASE QUANTITY	625.0105	Topsoil	CY	-44
DECREASE QUANTITY	628.2006	Erosion Mat Urban Class I Type A	SY	-160
DECREASE QUANTITY	628.6505	Soil Stabilizer Type A	ACRE	-0.04
DECREASE QUANTITY	629.0210	Fertilizer Type B	CWT	-0.1
DECREASE QUANTITY	630.0500	Seed Water	MGAL	-5.7
DECREASE QUANTITY	645.0112	Geotextile Type DF Schedule B	SY	-30
INCREASE QUANTITY	650.5500	Construction Staking Curb Gutter and Curb & Gutter	LF	+110
DECREASE QUANTITY	650.7000	Construction Staking Concrete Pavement	LF	-570
DECREASE QUANTITY	652.0225	Conduit Rigid Nonmetallic schedule 40 2-inch	LF	-133
DECREASE QUANTITY	690.0250	Sawing Concrete	LF	-1,100
DECREASE QUANTITY	715.0720	Incentive Compressive Strength Concrete Pavement	DOL	-952
DECREASE QUANTITY	SPV.0060.613	Adjust Water Valve Box	EACH	-3
DECREASE QUANTITY	SPV.0085.501	Seeding	LB	-3
DECREASE QUANTITY	SPV.0090.003	Concrete Curb & Gutter 24-Inch Type H Special	LF	-41
DECREASE QUANTITY	SPV.0090.004	Concrete Curb & Gutter Integral 24-Inch Special	LF	-70
DECREASE QUANTITY	SPV.0090.006	Concrete Curb Extension 6-Inch	LF	-10
INCREASE QUANTITY	SPV.0090.401	Pedestrian Handrail	LF	+2
INCREASE QUANTITY	SPV.0090.602	PVC Pipe 8-Inch	LF	+42
DECREASE QUANTITY	SPV.0090.607	PVC Pipe 4-Inch	LF	-6
DECREASE QUANTITY	SPV.0090.609	PVC Pipe 10-Inch	LF	-6
INCREASE QUANTITY	SPV.0165.401	Concrete Sloped Walkway	SF	+60

Sincerely,

A handwritten signature in black ink, appearing to read "Jim Wolfe", written over a horizontal line.

Jim Wolfe  
City Engineer

JMW

STATION PLATFORM LOCATION	PLATFORM DIRECTION	PLATFORM LENGTH (FT)	PLATFORM WIDTH (FT)	PLATFORM HEIGHT (IN)	CANOPY SIZE	LONGITUDINAL SLOPE	CROSS SLOPE	PLATFORM DETAIL DWG NO.	DISCHARGE TYPE	STAIR RISE	HANDRAIL	SOLAR PANELS
JUNCTION ROAD	END OF LINE	60	10	13.5	20'-5" x 9'-6"	0.9%	1.50%	CURBSIDE CHARGING STATION (A6)	GRASS AREA AND CONNECT TO SEWER			
JUNCTION ROAD	END OF LINE	60	10	13.5	20'-5" x 9'-6"	1.2%	1.50%	CURBSIDE CHARGING STATION (A6)				
MINERAL POINT ROAD AT HIGH POINT ROAD	EB/WB	60	12	13.5	60'-6" x 11'-0"	2.2%	1.50%	CENTER (B1)	DIRECT CONNECT TO SEWER			YES
MINERAL POINT ROAD AT WESTFIELD ROAD	EB/WB	60	12	13.5	60'-6" x 11'-0"	1.6%	1.7-1.5%	CENTER (B1)	DISCHARGE TO FLOWLINE			YES
MINERAL POINT ROAD AT GRAND CANYON DRIVE	EB/WB	60	12	13.5	60'-6" x 11'-0"	3.0%	1.50%	CENTER (B1)	DIRECT CONNECT TO SEWER			YES
MINERAL POINT ROAD AT ISLAND DRIVE	EB/WB	60	12	13.5	60'-6" x 11'-0"	0.6%	1.50%	CENTER (B1)	DISCHARGE TO FLOWLINE			YES
MINERAL POINT ROAD AT ROSA ROAD	EB/WB	60	12	13.5	60'-6" x 11'-0"	0.7%	1.50%	CENTER (B1)	DISCHARGE TO FLOWLINE			YES
WHITNEY WAY AT MINERAL POINT ROAD	EB/WB	60	12	13.5	60'-6" x 11'-0"	5.0%	1.50%	CENTER (B1)	DIRECT CONNECT TO SEWER			YES
WHITNEY WAY AT REGENT STREET	EB/WB	50	12	13.5	23'-5" X 11'-0"	1.2%	1.50%	REDUCED CENTER (C)	NO STORM SEWER			
SHEBOYGAN AVENUE AT EAU CLAIRE AVENUE	EB/WB	60	12	13.5	60'-6" x 11'-0"	1.1%	1.50%	CENTER (B1)	NO STORM SEWER			YES
SHEBOYGAN AVENUE AT SEGOE ROAD	WB	60	10	13.5	60'-6" x 9'-6"	2.4%	1.50%	CURBSIDE - ISLAND (A1)	DISCHARGE TO FLOWLINE			YES
SHEBOYGAN AVENUE AT SEGOE ROAD	EB	60	10	13.5	60'-6" x 9'-6"	2.7%	1.50%	CURBSIDE CENTER (A7)				YES
UNIVERSITY AVENUE AT MIDVALE BOULEVARD	EB/WB	60	12	13.5	60'-6" x 11'-0"	0.9%	1.50%	CENTER (B1)				
UNIVERSITY AVENUE AT SHOREWOOD BOULEVARD	EB/WB	60	12	13.5	60'-6" x 11'-0"	0.4%	1.40%	CENTER (B1)	DIRECT CONNECT TO SEWER			YES
UNIVERSITY AVENUE AT UNIVERSITY BAY DRIVE	EB/WB	60	12	13.5	60'-6" x 11'-0"	0.4%	1.50%	CENTER (B1)	DIRECT CONNECT TO SEWER			YES
UNIVERSITY AVENUE AT ORCHARD STREET	WB	60	10	13.5	60'-6" x 9'-6"	0.3%	1.50%	CURBSIDE (A2)	DIRECT CONNECT TO SEWER	1 RISER 7.0"	NO	YES
JOHNSON STREET AT ORCHARD STREET	EB	60	10	13.5	60'-6" x 9'-6"	0.4%	1.50%	CURBSIDE (A2)	DIRECT CONNECT TO SEWER	1 RISER 6.72"	NO	YES
UNIVERSITY AVENUE AT EAST CAMPUS MALL	WB	60	10	13.5	60'-6" x 9'-6"	0.5%	1.50%	CURBSIDE (A1)		1 RISER 5.0"	NO	YES
UNIVERSITY AVENUE AT EAST CAMPUS MALL	SB	60	10	13.5	N/A	0.3%	1.50%	NO CANOPY				
JOHNSON STREET AT EAST CAMPUS MALL	EB	60	10	13.5	60'-6" x 9'-6"	1.1%	1.50%	CURBSIDE (A1)	NO STORM SEWER			YES
STATE STREET - GORHAM STREET	WB	50	10	13.5	23'-5" X 9'-6"	1.6-1.7%	1.50%	REDUCED CURBSIDE (A4)	DISCHARGE TO FLOWLINE	1 RISERS 6"	NO	
STATE STREET - JOHNSON STREET	EB	50	10	13.5	23'-5" X 9'-6"	2.3%	1.50%	REDUCED CURBSIDE (A3)	DIRECT CONNECT TO INLET *	1 RISER 6"	NO	
CAPITOL SQUARE - MIFFLIN STREET AT WISCONSON AVENUE	WB	60	10	13.5	60'-6" x 9'-6"	1.0%	1.50%	CURBSIDE (A2)	DIRECT CONNECT TO INLET *	2 RISERS 5.67"	YES	YES
CAPITOL SQUARE - MAIN STREET AT MARTLIN LUTHER KING BOULEVARD	EB	60	10	13.5	60'-6" x 9'-6"	1.4%	1.50%	CURBSIDE (A2)	DIRECT CONNECT TO INLET *	2 RISERS 5.55"	YES	YES
EAST WASHINGTON AVENUE AT BLAIR STREET	EB/WB	60	14	13.5	60'-6" X 13'-0"	4.3%	1.30%	CENTER (B2)	DISCHARGE TO FLOWLINE			YES
EAST WASHINGTON AVENUE AT PATERSON STREET	EB/WB	60	14	13.5	60'-6" X 13'-0"	0.2-0.4%	1.5-0.5%	CENTER (B2)	DIRECT CONNECT TO INLET *			YES
EAST WASHINGTON AVENUE AT BALDWIN STREET	EB/WB	60	14	13.5	60'-6" X 13'-0"	0.5%	1.50%	CENTER (B2)	DIRECT CONNECT TO INLET *			YES
EAST WASHINGTON AVENUE AT FIRST STREET	EB/WB	60	12	13.5	60'-6" X 11'-0"	3.4-3.5%	1.5-1.4%	CENTER (B1)	DIRECT CONNECT TO INLET			YES
EAST WASHINGTON AVENUE AT FOURTH STREET	EB/WB	60	14	13.5	60'-6" X 13'-0"	0.8%	1.50%	CENTER (B2)	DIRECT CONNECT TO INLET			YES
EAST WASHINGTON AVENUE AT MILWAUKEE-NORTH STREET	WB	60	10	13.5	60'-6" X 9'-6"	0.4%	1.50%	CURBSIDE CENTER (A5)	DIRECT CONNECT TO INLET			YES
EAST WASHINGTON AVENUE AT MILWAUKEE-NORTH STREET	EB	60	10	13.5	60'-6" X 9'-6"	1.3%	1.50%	CURBSIDE CENTER (A5)	DIRECT CONNECT TO MANHOLE			YES
EAST WASHINGTON AVENUE AT MARQUETTE STREET	EB/WB	60	14	13.5	60'-6" X 13'-0"	0.4%	1.50%	CENTER (B2)	DIRECT CONNECT TO INLET *			YES
EAST WASHINGTON AVENUE AT MELVIN COURT-RETHKE AVENUE	EB/WB	60	14	13.5	60'-6" X 13'-0"	0.4%	1.5-1.3%	CENTER (B2)	DIRECT CONNECT TO INLET *			YES
EAST WASHINGTON AVENUE AT WRIGHT STREET - FAIR OAKS AVENUE	EB/WB	60	12	13.5	60'-6" x 11'-0"	1.6%	1.50%	CENTER (B1)	DIRECT CONNECT TO INLET			YES
WRIGHT STREET AT ANDERSON STREET	WB	60	10	13.5	60'-6" X 9'-6"	1.0%	1.50%	CURBSIDE - ISLAND (A2)	DISCHARGE TO FLOWLINE - NO TLE			YES
WRIGHT STREET AT ANDERSON STREET	EB	60	10	13.5	60'-6" X 9'-6"	1.1%	1.50%	CURBSIDE - ISLAND (A1)	DIRECT CONNECT TO INLET	1 RISER 6.5"	NO	YES
EAST WASHINGTON AVENUE AT MENDOTA STREET	WB	50	10	13.5	23'-5" X 9'-6"	0.5%	1.50%	REDUCED CURBSIDE (A4)	DISCHARGE TO FLOWLINE			
EAST WASHINGTON AVENUE AT MENDOTA STREET	EB	60	10	13.5	60'-6" X 9'-6"	0.6%	1.50%	CURBSIDE - ISLAND (A1)	DISCHARGE TO FLOWLINE	1 RISER 6.5"	NO	YES
EAST WASHINGTON AVENUE AT THIERER ROAD - PORTAGE AVENUE	WB	60	10	13.5	60'-6" X 9'-6"	0.4%	1.50%	CURBSIDE - ISLAND (A1)	DIRECT CONNECT TO INLET *			YES
EAST WASHINGTON AVENUE AT THIERER ROAD - PORTAGE AVENUE	EB	60	10	13.5	60'-6" X 9'-6"	0.4%	1.50%	CURBSIDE - ISLAND (A1)	DIRECT CONNECT TO INLET *			YES
EAST WASHINGTON AVENUE AT INDEPENDENCE LANE	WB	60	10	13.5	60'-6" X 9'-6"	1.1%	1.50%	CURBSIDE - ISLAND (A1)	DIRECT CONNECT TO INLET			YES
EAST WASHINGTON AVENUE AT INDEPENDENCE LANE	EB	60	10	13.5	60'-6" X 9'-6"	1.3%	1.50%	CURBSIDE - ISLAND (A1)	DIRECT CONNECT TO INLET			YES
EAST WASHINGTON AVENUE AT EAST SPRINGS DRIVE	WB	60	10	13.5	60'-6" X 9'-6"	2.9%	1.50%	CURBSIDE - ISLAND (A1)	DISCHARGE TO FLOWLINE			YES
EAST WASHINGTON AVENUE AT EAST SPRINGS DRIVE	EB	60	10	13.5	60'-6" X 9'-6"	2.4%	1.50%	CURBSIDE - ISLAND (A2)	DISCHARGE TO FLOWLINE			YES
HANSON ROAD TEST PLATFORM	EB/WB	60	12	13.5	N/A	0.3%	1.50%	NO CANOPY				

\* DOWNSPOUT ORIENTATION FLIPPED TO FRONT STATION

PLATFORM & CANOPY TYPE	TOTAL
CURBSIDE (A1)	2
CURBSIDE (A2)	4
CURBSIDE - ISLAND (A1)	8
CURBSIDE - ISLAND (A2)	2
REDUCED CURBSIDE (A3)	1
REDUCED CURBSIDE (A4)	2
CURBSIDE CENTER (A5)	2
CURBSIDE CHARGING STATION (A6)	2
CURBSIDE CENTER (A7)	1
CENTER (B1)	12
CENTER (B2)	6
REDUCED CENTER (C)	1
NO CANOPY	2

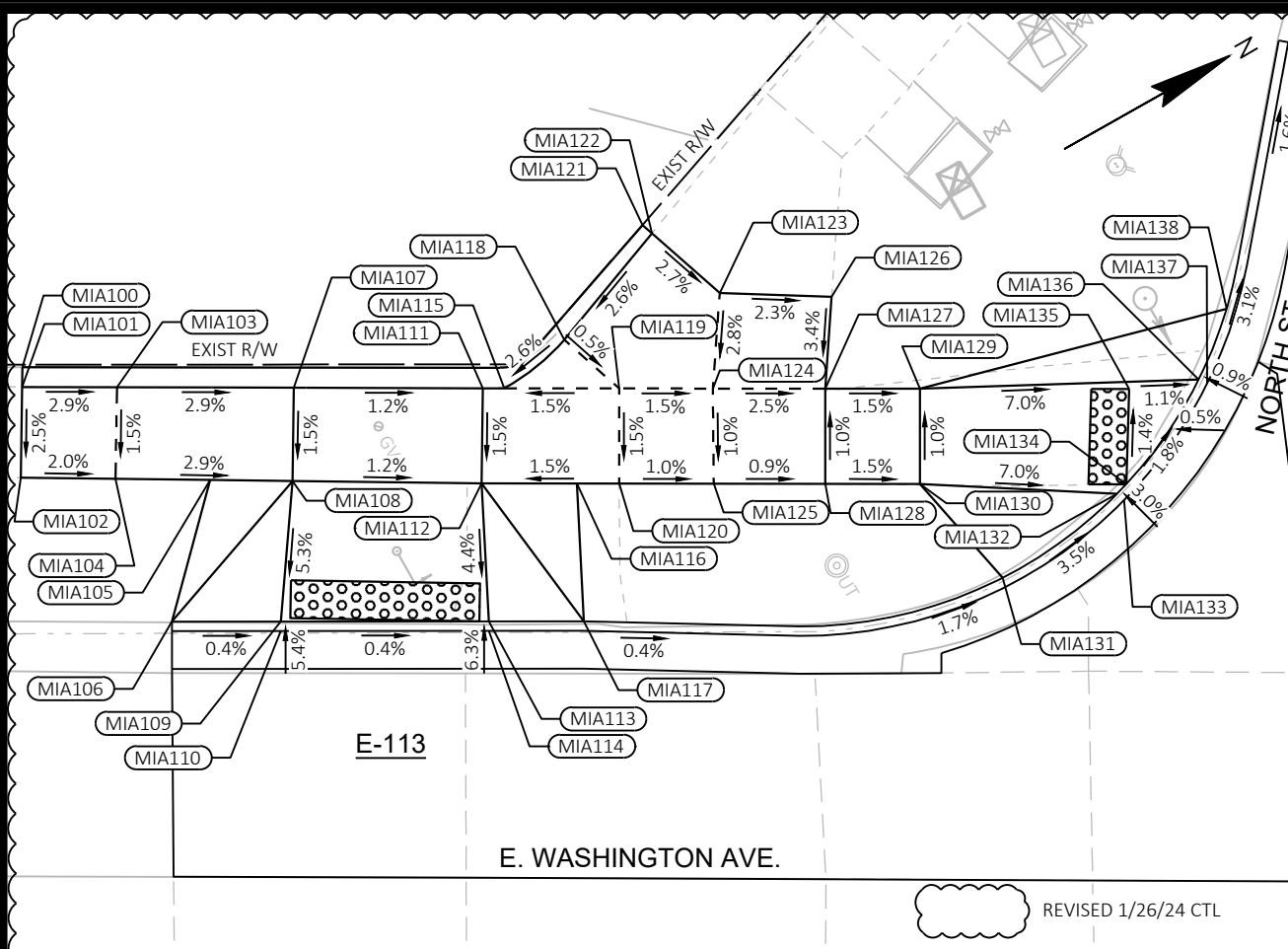
02/12/24 MEM	08/16/23 MEM	04/21/23 MEM	11/22/23 MEM
PLAN REVISION 9	PLAN REVISION 5	PLAN REVISION 3	ADDENDUM 4
PLAN REVISION 4 & PLAN REVISION 5	PLAN REVISION 1 & PLAN REVISION 3	ADDENDUM 3 & ADDENDUM 4	REVISION
MARK	DATE	BY	Scale: N/A
Designed By: AECOM   Date: 2024-02-05			
60631225P			

PROJECT OVERVIEW  
 BUS RAPID TRANSIT  
 CITY OF MADISON  
 60631225P  
 CITY OF MADISON, DANE COUNTY, WI  
 CONTRACT NO: 60631225C



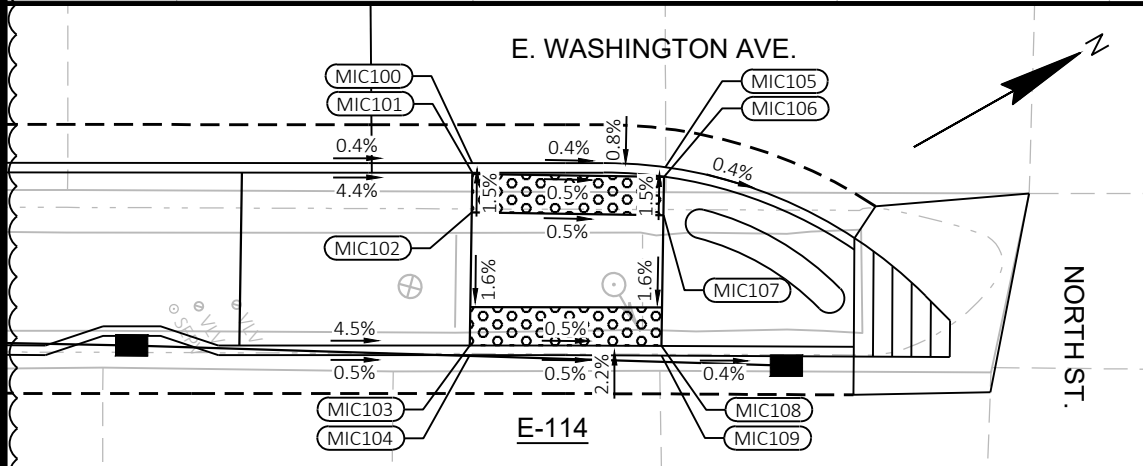
60631225P

0-5

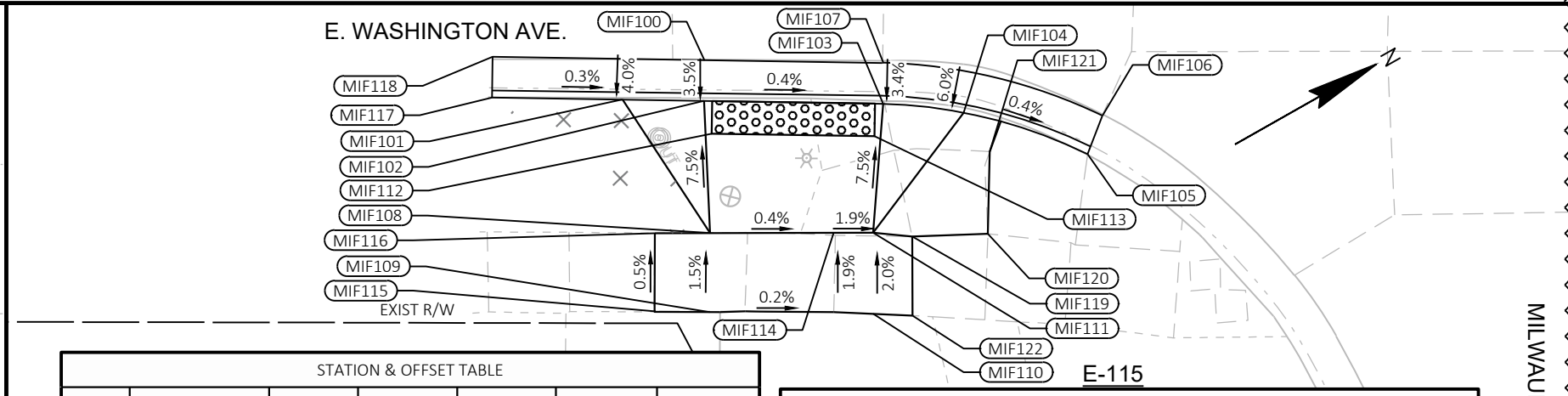


STATION & OFFSET TABLE						
POINT	STATION	OFFSET	Y COORDS	X COORDS	ELEVATION	COMMENT
MIA100	328+61.64 'WA'	48.81' LT	492155.88	830524.36	862.41	MATCH
MIA101	328+61.63 'WA'	47.77' LT	492155.35	830525.26	862.38	BOW
MIA102	328+61.57 'WA'	42.97' LT	492152.92	830529.39	862.26	FOW
MIA103	328+66.63 'WA'	47.77' LT	492159.69	830527.73	862.23	BOW
MIA104	328+66.57 'WA'	42.93' LT	492157.25	830531.90	862.16	FOW
MIA105	328+71.57 'WA'	42.90' LT	492161.57	830534.41	862.01	FOW
MIA106	328+69.58 'WA'	35.41' LT	492156.13	830539.92	861.99	BOC
MIA107	328+75.97 'WA'	47.77' LT	492167.81	830532.36	861.96	BOW
MIA108	328+75.91 'WA'	42.84' LT	492165.32	830536.61	861.89	FOW
MIA109	328+75.33 'WA'	35.43' LT	492161.14	830542.76	861.49	BOC
MIA110	328+75.33 'WA'	34.93' LT	492160.89	830543.19	861.47	FOC
MIA111	328+85.96 'WA'	47.77' LT	492176.48	830537.31	861.84	BOW
MIA112	328+85.90 'WA'	42.76' LT	492173.95	830541.63	861.76	FOW
MIA113	328+86.32 'WA'	35.47' LT	492170.70	830548.17	861.44	BOC
MIA114	328+86.32 'WA'	34.97' LT	492170.45	830548.60	861.42	FOC
MIA115	328+87.08 'WA'	47.78' LT	492177.46	830537.86	861.86	BOW
MIA116	328+90.94 'WA'	42.77' LT	492178.33	830544.12	861.84	FOW
MIA117	328+91.32 'WA'	35.49' LT	492175.05	830550.63	861.90	BOC
MIA118	328+90.24 'WA'	50.35' LT	492181.49	830537.19	861.97	BOW
MIA119	328+93.15 'WA'	47.79' LT	492182.74	830540.85	861.95	BOW

STATION & OFFSET TABLE						
POINT	STATION	OFFSET	Y COORDS	X COORDS	ELEVATION	COMMENT
MIA120	328+93.16 'WA'	42.78' LT	492180.26	830545.22	861.87	FOW
MIA121	328+94.35 'WA'	56.42' LT	492188.06	830533.95	862.18	MATCH
MIA122	328+94.85 'WA'	55.99' LT	492188.28	830534.58	862.15	BOW
MIA123	328+98.44 'WA'	52.86' LT	492189.85	830539.08	862.03	FOW
MIA124	328+98.09 'WA'	47.80' LT	492187.03	830543.30	861.88	BOW
MIA125	328+98.16 'WA'	42.79' LT	492184.61	830547.69	861.83	FOW
MIA126	329+04.35 'WA'	52.66' LT	492194.88	830542.18	861.89	FOW
MIA127	329+04.04 'WA'	47.82' LT	492192.21	830546.23	861.72	BOW
MIA128	329+04.04 'WA'	42.80' LT	492189.72	830550.59	861.78	FOW
MIA129	329+09.04 'WA'	47.84' LT	492196.56	830548.69	861.65	BOW
MIA130	329+09.04 'WA'	42.81' LT	492194.07	830553.06	861.70	FOW
MIA131	329+13.42 'WA'	37.87' LT	492195.43	830559.53	861.72	BOC
MIA132	329+19.47 'WA'	42.33' LT	492202.89	830558.65	860.97	BOC
MIA133	329+19.83 'WA'	41.98' LT	492203.03	830559.13	860.96	FOC
MIA134	329+19.94 'WA'	42.83' LT	492203.55	830558.45	860.96	BOC
MIA135	329+20.08 'WA'	47.86' LT	492206.16	830554.14	860.89	DWF
MIA136	329+23.75 'WA'	48.37' LT	492209.60	830555.52	860.84	BOC
MIA137	329+24.20 'WA'	48.15' LT	492209.88	830555.93	860.83	FOC
MIA138	329+25.21 'WA'	52.11' LT	492212.73	830552.99	861.20	BOC



STATION & OFFSET TABLE						
POINT	STATION	OFFSET	Y COORDS	X COORDS	ELEVATION	COMMENT
MIC100	328+75.30 'WA'	9.66' RT	492138.76	830581.91	862.58	EOP
MIC101	328+75.31 'WA'	10.16' RT	492138.52	830582.35	862.60	FOW
MIC102	328+75.28 'WA'	12.23' RT	492137.47	830584.13	862.63	EOP
MIC103	328+75.20 'WA'	19.16' RT	492133.97	830590.11	862.52	FOW
MIC104	328+75.20 'WA'	19.66' RT	492133.72	830590.55	862.51	FOW
MIC105	328+85.36 'WA'	9.85' RT	492147.40	830587.06	862.54	EOP
MIC106	328+85.29 'WA'	10.35' RT	492147.10	830587.46	862.55	FOW
MIC107	328+85.27 'WA'	12.35' RT	492146.09	830589.18	862.58	EOP
MIC108	328+85.19 'WA'	19.15' RT	492142.65	830595.06	862.47	FOW
MIC109	328+85.19 'WA'	19.65' RT	492142.40	830595.49	862.46	EOP



STATION & OFFSET TABLE						
POINT	STATION	OFFSET	Y COORDS	X COORDS	ELEVATION	COMMENT
MIF100	328+74.01 'WA'	79.33' RT	492103.11	830641.78	861.88	EOP
MIF101	328+68.99 'WA'	81.73' RT	492097.56	830641.37	862.29	BOC
MIF102	328+73.99 'WA'	81.79' RT	492101.87	830643.90	861.87	BOC
MIF103	328+84.97 'WA'	81.93' RT	492111.34	830649.47	861.81	BOC
MIF104	328+89.91 'WA'	82.46' RT	492115.37	830652.38	861.93	BOC
MIF105	328+97.53 'WA'	84.98' RT	492120.74	830658.34	862.16	MATCH
MIF106	328+98.41 'WA'	82.63' RT	492122.67	830656.74	861.82	MATCH
MIF107	328+84.99 'WA'	79.43' RT	492112.59	830647.31	861.84	EOP
MIF108	328+74.40 'WA'	89.89' RT	492098.21	830651.14	862.48	FOW
MIF109	328+74.39 'WA'	94.74' RT	492095.81	830655.35	862.55	BOW
MIF110	328+84.40 'WA'	94.81' RT	492104.47	830660.38	862.50	BOW
MIF111	328+84.38 'WA'	89.84' RT	492106.91	830656.05	862.41	FOW

STATION & OFFSET TABLE						
POINT	STATION	OFFSET	Y COORDS	X COORDS	ELEVATION	COMMENT
MIF112	328+74.46 'WA'	83.80' RT	492101.29	830645.88	862.03	FOW
MIF113	328+84.45 'WA'	83.92' RT	492109.90	830650.94	862.01	FOW
MIF114	328+81.96 'WA'	89.85' RT	492104.81	830654.86	862.45	FOW
MIF115	328+71.00 'WA'	94.69' RT	492092.88	830653.63	862.53	BOW
MIF116	328+71.00 'WA'	89.91' RT	492095.25	830649.47	862.51	FOW
MIF117	328+60.99 'WA'	81.63' RT	492090.66	830637.32	862.24	MATCH
MIF118	328+61.02 'WA'	79.14' RT	492091.92	830635.17	861.96	MATCH
MIF119	328+86.78 'WA'	90.06' RT	492108.89	830657.43	862.36	MATCH
MIF120	328+91.42 'WA'	89.87' RT	492113.01	830659.57	862.28	MATCH
MIF121	328+91.52 'WA'	84.85' RT	492115.59	830655.25	862.00	MATCH
MIF122	328+86.82 'WA'	94.91' RT	492106.51	830661.66	862.47	MATCH

PLAN REVISION 9 1/26/24 CTL  
 PLAN REVISION 4 4/6/23 DJC  
 APPENDIX 3 11/10/22 DJC  
 REVISION DATE BY  
 MARK  
 Designed By: STRANIP Date: 2024-02-01  
 60631225P

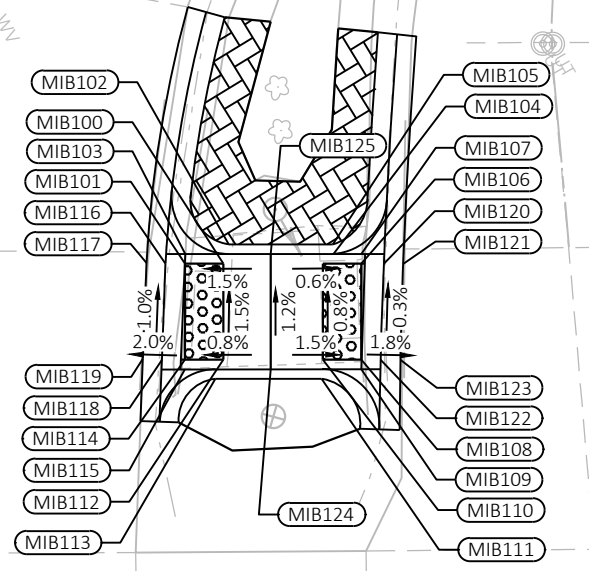
60631225P  
 CITY OF MADISON, DANE COUNTY, WI  
 CONTRACT NO: 60631225C

CURB RAMP DETAILS  
 BUS RAPID TRANSIT  
 CITY OF MADISON  
 MILWAUKEE ST.

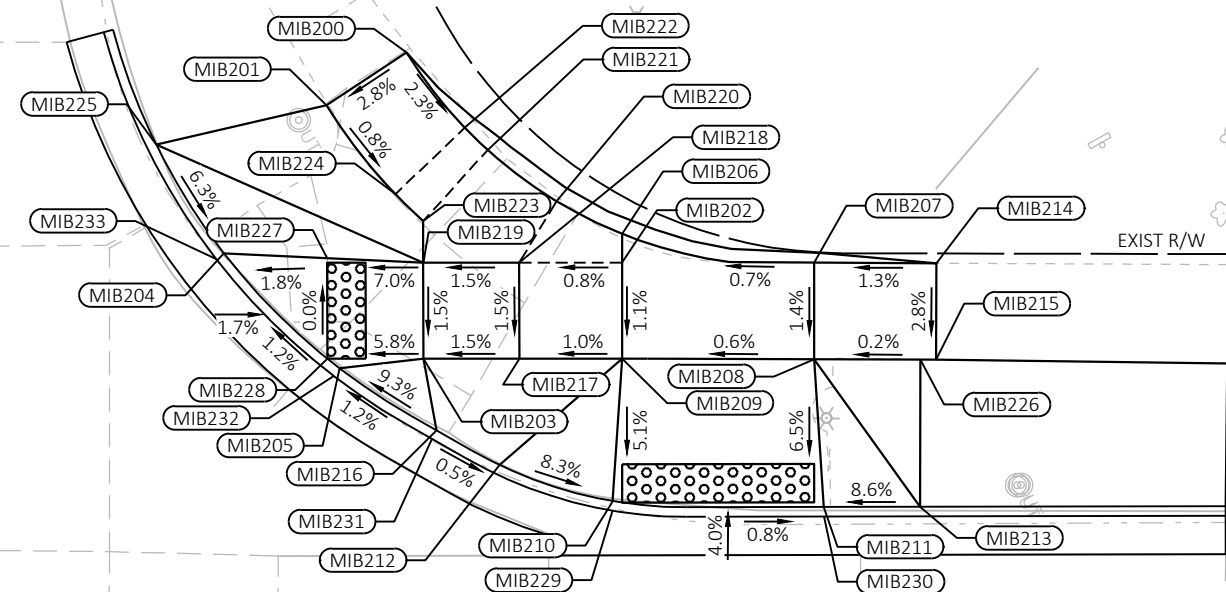
60631225P  
 CR8-E

FILE NAME: C:\P\WORKING\AECOM\_DS20\_NA\_2019\LYN21141\N0107215\021306-CR.DWG  
 LAST PLOT DATE: 2024-02-01  
 LAYOUT NAME: 021306.ctb





E-116



E-117

E. WASHINGTON AVE.

STATION & OFFSET TABLE

POINT	STATION	OFFSET	Y COORDS	X COORDS	ELEVATION	COMMENT
MIB100	329+56.96 WA	48.02' LT	492238.28	830572.29	861.02	EOP
MIB101	329+54.96 WA	48.01' LT	492236.54	830571.30	861.01	FOW
MIB102	329+57.24 WA	49.02' LT	492239.02	830571.56	861.46	BOC
MIB103	329+54.99 WA	48.51' LT	492236.81	830570.88	861.01	BOC
MIB104	329+62.71 WA	48.55' LT	492243.53	830574.68	861.08	EOP
MIB105	329+62.67 WA	49.05' LT	492243.74	830574.22	861.37	BOC
MIB106	329+64.15 WA	48.05' LT	492244.54	830575.82	861.07	FOW
MIB107	329+64.15 WA	48.55' LT	492244.79	830575.39	861.07	BOC
MIB108	329+64.18 WA	43.05' LT	492242.08	830580.18	861.09	FOW
MIB109	329+64.17 WA	42.55' LT	492241.82	830580.60	861.09	FOC
MIB110	329+62.18 WA	43.04' LT	492240.34	830579.19	861.12	EOP
MIB111	329+62.11 WA	42.04' LT	492239.79	830580.03	861.41	FOC
MIB112	329+56.98 WA	43.02' LT	492235.82	830576.64	861.12	EOP
MIB113	329+56.57 WA	42.02' LT	492234.96	830577.30	861.38	FOC
MIB114	329+54.98 WA	43.01' LT	492234.08	830575.66	861.11	FOW
MIB115	329+54.99 WA	42.51' LT	492233.83	830576.09	861.16	FOC
MIB116	329+53.96 WA	48.01' LT	492235.66	830570.81	861.00	FL
MIB117	329+52.96 WA	48.04' LT	492234.81	830570.28	861.04	MATCH
MIB118	329+53.78 WA	43.01' LT	492233.03	830575.06	861.11	FL
MIB119	329+52.78 WA	43.04' LT	492232.18	830574.54	861.10	MATCH
MIB120	329+65.33 WA	48.06' LT	492245.56	830576.40	861.06	FL
MIB121	329+66.33 WA	48.05' LT	492246.42	830576.91	861.05	MATCH
MIB122	329+65.18 WA	43.06' LT	492242.95	830580.67	861.08	FL
MIB123	329+66.21 WA	43.04' LT	492243.84	830581.20	861.06	MATCH
MIB124	329+59.46 WA	42.53' LT	492237.73	830578.29	861.16	EOP
MIB125	329+59.44 WA	48.53' LT	492240.68	830573.07	861.09	EOP

STATION & OFFSET TABLE

POINT	STATION	OFFSET	Y COORDS	X COORDS	ELEVATION	COMMENT
MIB200	330+04.70 WA	59.18' LT	492285.27	830586.25	861.26	BOW
MIB201	330+00.53 WA	56.42' LT	492280.28	830586.59	861.12	FOW
MIB202	330+15.97 WA	48.28' LT	492289.66	830601.30	861.11	EOP
MIB203	330+05.63 WA	43.24' LT	492278.18	830600.56	860.92	FOW
MIB204	329+95.22 WA	48.70' LT	492271.84	830590.66	860.55	BOC
MIB205	330+01.27 WA	42.72' LT	492274.13	830598.85	860.66	BOC
MIB206	330+15.96 WA	49.77' LT	492290.39	830600.01	861.13	BOW
MIB207	330+25.97 WA	48.31' LT	492298.36	830606.23	861.19	BOW
MIB208	330+25.99 WA	43.28' LT	492295.88	830610.61	861.12	FOW
MIB209	330+15.99 WA	43.28' LT	492287.19	830605.65	861.06	FOW
MIB210	330+15.52 WA	35.86' LT	492283.11	830611.87	860.69	BOC
MIB211	330+26.52 WA	35.59' LT	492292.53	830617.55	860.62	BOC
MIB212	330+09.61 WA	37.72' LT	492278.90	830607.33	861.21	BOC
MIB213	330+31.61 WA	35.61' LT	492296.88	830620.01	861.05	BOC
MIB214	330+32.46 WA	48.29' LT	492303.88	830609.39	861.27	BOW
MIB215	330+32.45 WA	43.27' LT	492301.39	830613.76	861.13	FOW
MIB216	330+06.34 WA	39.51' LT	492276.94	830604.15	861.22	BOC
MIB217	330+10.63 WA	43.26' LT	492282.53	830603.02	861.00	FOW

STATION & OFFSET TABLE

POINT	STATION	OFFSET	Y COORDS	X COORDS	ELEVATION	COMMENT
MIB218	330+10.61 WA	48.26' LT	492284.99	830598.67	861.07	EOP
MIB219	330+05.61 WA	48.24' LT	492280.64	830596.21	861.00	BOW
MIB220	330+12.53 WA	51.47' LT	492288.25	830596.84	861.13	BOW
MIB221	330+08.94 WA	54.12' LT	492286.45	830592.75	861.11	BOW
MIB222	330+07.74 WA	55.28' LT	492285.98	830591.15	861.15	BOW
MIB223	330+05.60 WA	50.40' LT	492281.70	830594.32	861.04	FOW
MIB224	330+04.15 WA	51.80' LT	492281.13	830592.39	861.07	FOW
MIB225	329+91.68 WA	54.34' LT	492271.56	830584.00	860.98	BOC
MIB226	330+31.64 WA	43.27' LT	492300.68	830613.35	861.13	FOW
MIB227	330+00.61 WA	48.46' LT	492276.40	830593.54	860.65	FOW
MIB228	330+00.63 WA	43.22' LT	492273.82	830598.10	860.65	BOC
MIB229	330+15.50 WA	35.36' LT	492282.85	830612.30	860.66	EOP
MIB230	330+26.52 WA	35.09' LT	492292.28	830617.99	860.59	EOP
MIB231	330+06.09 WA	39.07' LT	492276.51	830604.41	860.72	FL H. P.
MIB232	330+00.96 WA	42.32' LT	492273.67	830599.04	860.65	FL
MIB233	329+94.83 WA	48.39' LT	492271.35	830590.73	860.54	FL

REVISED 1/26/24 CTL

CTL	1/26/24	DATE	BY
PLAN REVISION 9	4/10/23	DATE	BY
PLAN REVISION 4		DATE	BY
MARK		DATE	BY
REVISION		DATE	BY
DESIGNED BY: STRANIP	DATE: 2024-02-01		
60631225P			Scale: 1" = 10'

60631225P  
 CITY OF MADISON, DANE COUNTY, WI  
 CONTRACT NO: 60631225C  
 CURB RAMP DETAILS  
 BUS RAPID TRANSIT  
 CITY OF MADISON

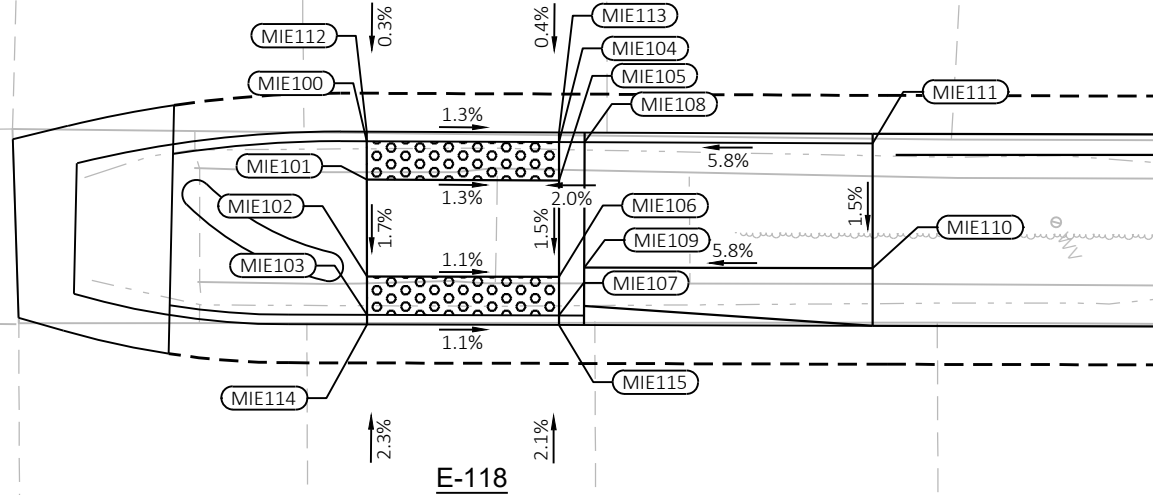


60631225P  
CR9-E



NORTH ST.

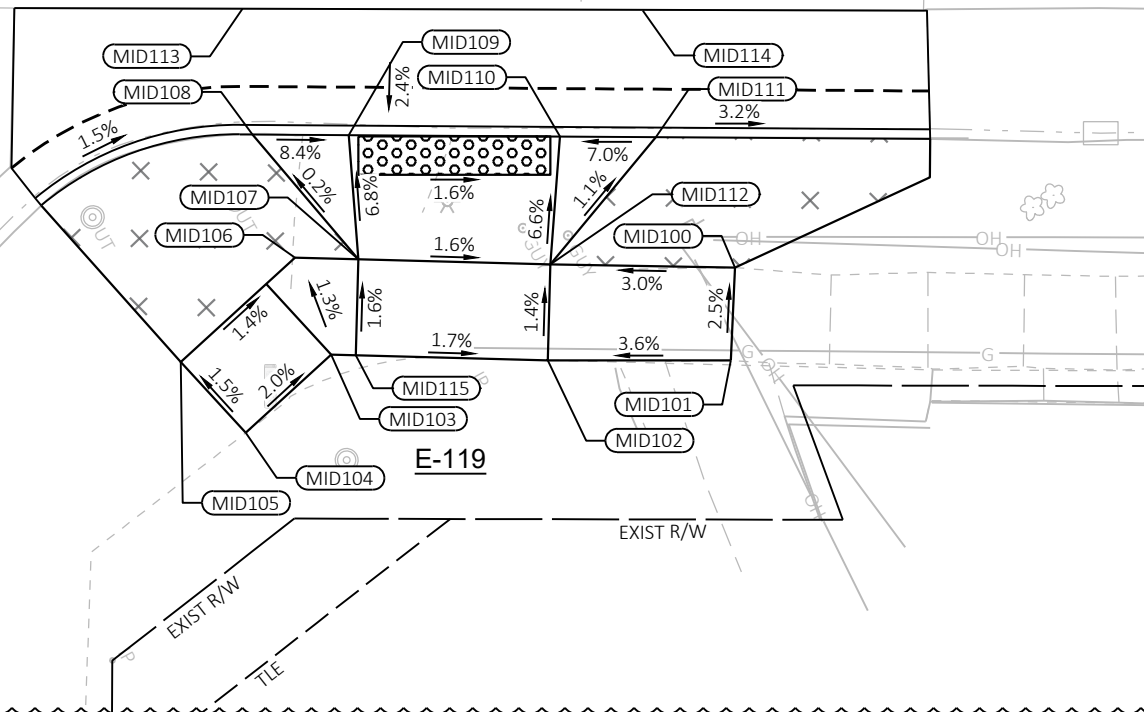
330+00 WA



E-118

E. WASHINGTON AVE.

MILWAUKEE ST.



E-119

EXIST R/W

EXIST R/W

T/E

REVISED 1/26/24 CTL

STATION & OFFSET TABLE						
POINT	STATION	OFFSET	Y COORDS	X COORDS	ELEVATION	COMMENT
MIE100	330+16.23 WA	21.01' RT	492255.54	830661.62	861.74	EOP
MIE101	330+16.24 WA	23.01' RT	492254.55	830663.36	861.71	FOW
MIE102	330+16.26 WA	28.06' RT	492252.07	830667.75	861.62	FOW
MIE103	330+16.26 WA	30.06' RT	492251.08	830669.49	861.59	EOP
MIE104	330+26.23 WA	21.02' RT	492264.22	830666.58	861.61	EOP
MIE105	330+26.24 WA	23.02' RT	492263.23	830668.32	861.58	FOW
MIE106	330+26.26 WA	28.05' RT	492260.76	830672.70	861.51	FOW
MIE107	330+26.26 WA	30.05' RT	492259.77	830674.44	861.48	EOP
MIE108	330+27.57 WA	21.02' RT	492265.38	830667.25	861.64	TOP
MIE109	330+27.57 WA	27.55' RT	492262.15	830672.92	861.54	TOP
MIE110	330+42.51 WA	27.58' RT	492275.19	830680.35	862.40	TOP
MIE111	330+42.51 WA	21.07' RT	492278.40	830674.69	862.50	TOP
MIE112	330+16.23 WA	20.51' RT	492255.78	830661.18	861.73	FL
MIE113	330+26.23 WA	20.52' RT	492264.46	830666.15	861.60	FL
MIE114	330+16.27 WA	30.56' RT	492250.84	830669.93	861.58	FL
MIE115	330+26.27 WA	30.55' RT	492259.53	830674.88	861.47	FL

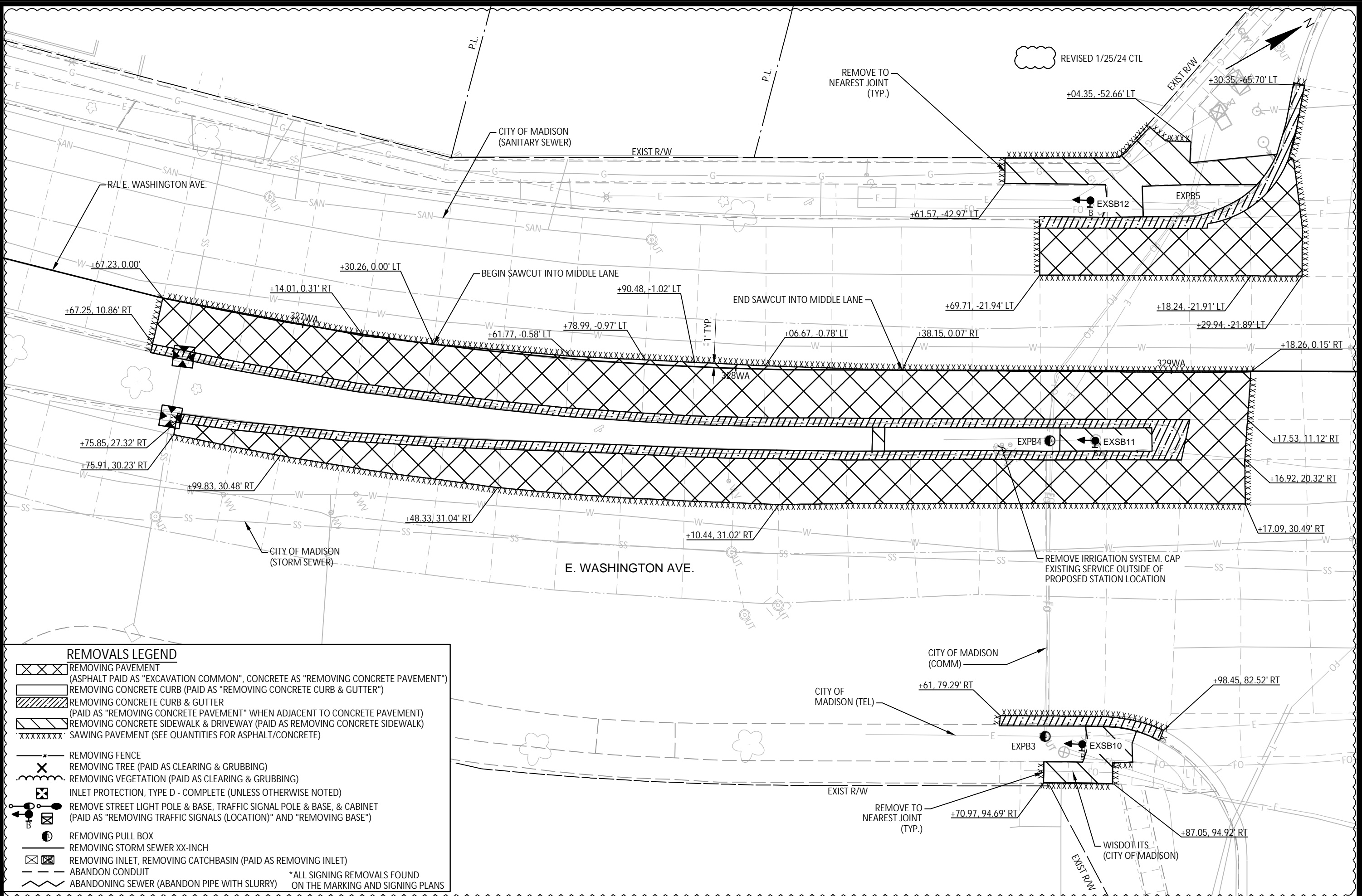
STATION & OFFSET TABLE						
POINT	STATION	OFFSET	Y COORDS	X COORDS	ELEVATION	COMMENT
MID100	330+35.85 'WA'	77.08' RT	492244.98	830720.13	861.86	MATCH
MID101	330+35.63 'WA'	81.91' RT	492242.41	830724.22	861.98	MATCH
MID102	330+26.33 'WA'	81.92' RT	492234.12	830719.52	861.64	BOW
MID103	330+15.04 'WA'	81.67' RT	492224.44	830713.71	861.81	BOW
MID104	330+10.61 'WA'	85.75' RT	492218.56	830715.06	861.93	MATCH
MID105	330+07.22 'WA'	82.07' RT	492217.45	830710.19	861.85	MATCH
MID106	330+13.14 'WA'	76.63' RT	492225.29	830708.39	861.73	FOW
MID107	330+16.44 'WA'	76.70' RT	492228.12	830710.09	861.73	FOW
MID108	330+10.91 'WA'	70.21' RT	492226.54	830701.72	861.71	BOC
MID109	330+15.91 'WA'	70.23' RT	492230.87	830704.21	861.29	BOC
MID110	330+26.91 'WA'	70.27' RT	492240.41	830709.69	861.13	BOC
MID111	330+31.72 'WA'	70.29' RT	492244.74	830712.18	861.47	BOC
MID112	330+26.44 'WA'	76.92' RT	492236.70	830715.24	861.57	FOW
MID113	330+10.37 'WA'	63.66' RT	492229.31	830695.75	861.44	EOP
MID114	330+31.05 'WA'	63.69' RT	492247.41	830706.11	861.20	EOP
MID115	330+16.33 'WA'	81.70' RT	492225.55	830714.38	861.81	BOW

PLAN REVISION 9	1/26/24	CTL
PLAN REVISION 4	4/10/23	DJC
MARK	DATE	BY
2		
1		
DESIGNED BY: STRANF	DATE: 2024-02-01	Scale: 1" = 10'
60631225P		

60631225P  
 CITY OF MADISON, DANE COUNTY, WI  
 CONTRACT NO: 60631225C



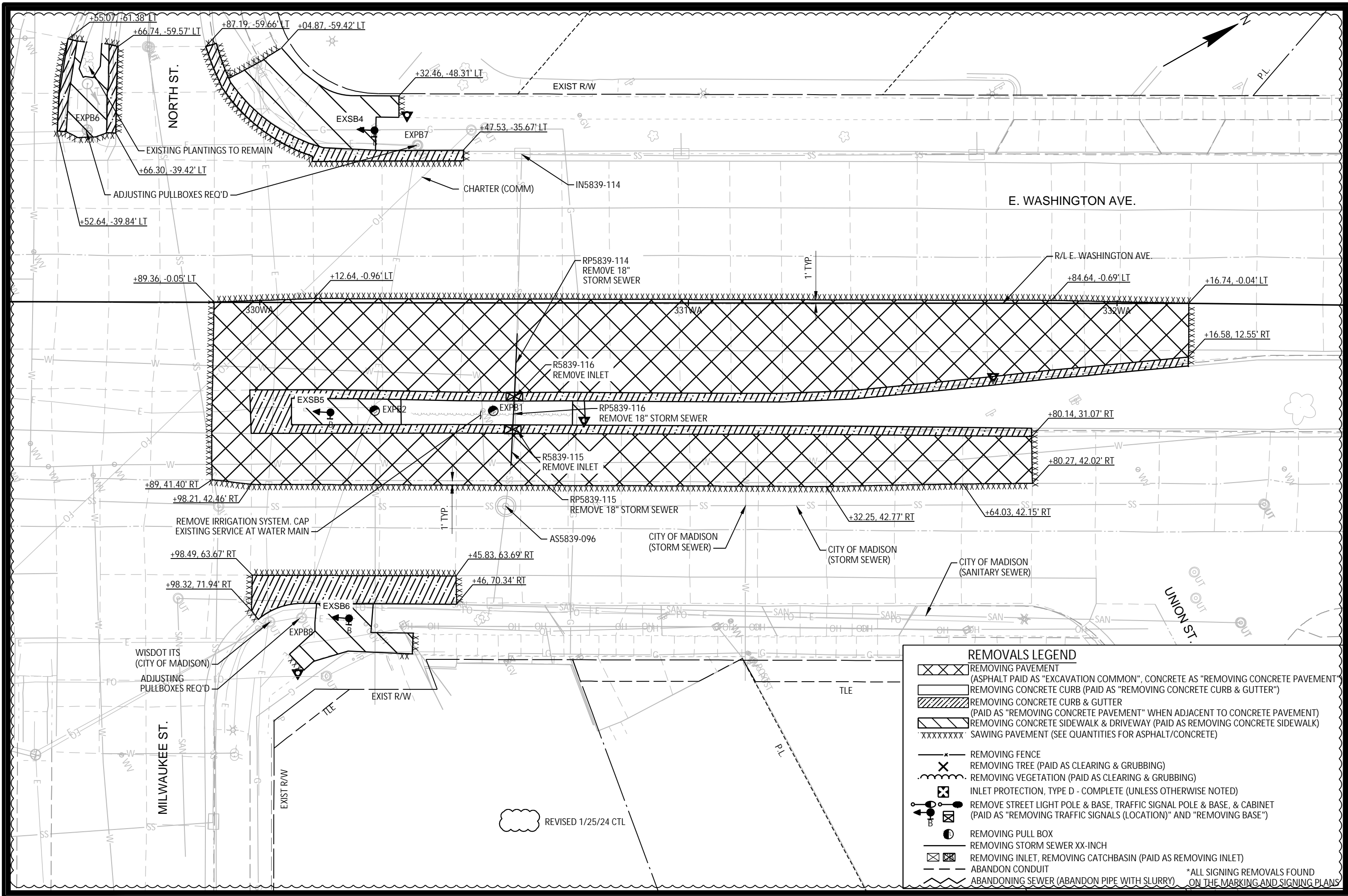
60631225P  
 CR10-E



**REMOVALS LEGEND**

- REMOVING PAVEMENT  
(ASPHALT PAID AS "EXCAVATION COMMON", CONCRETE AS "REMOVING CONCRETE PAVEMENT")
  - REMOVING CONCRETE CURB (PAID AS "REMOVING CONCRETE CURB & GUTTER")
  - REMOVING CONCRETE CURB & GUTTER  
(PAID AS "REMOVING CONCRETE PAVEMENT" WHEN ADJACENT TO CONCRETE PAVEMENT)
  - REMOVING CONCRETE SIDEWALK & DRIVEWAY (PAID AS REMOVING CONCRETE SIDEWALK)
  - SAWING PAVEMENT (SEE QUANTITIES FOR ASPHALT/CONCRETE)
  - REMOVING FENCE
  - REMOVING TREE (PAID AS CLEARING & GRUBBING)
  - REMOVING VEGETATION (PAID AS CLEARING & GRUBBING)
  - INLET PROTECTION, TYPE D - COMPLETE (UNLESS OTHERWISE NOTED)
  - REMOVE STREET LIGHT POLE & BASE, TRAFFIC SIGNAL POLE & BASE, & CABINET  
(PAID AS "REMOVING TRAFFIC SIGNALS (LOCATION)" AND "REMOVING BASE")
  - REMOVING PULL BOX
  - REMOVING STORM SEWER XX-INCH
  - REMOVING INLET, REMOVING CATCHBASIN (PAID AS REMOVING INLET)
  - ABANDON CONDUIT
  - ABANDONING SEWER (ABANDON PIPE WITH SLURRY)
- \*ALL SIGNING REMOVALS FOUND ON THE MARKING AND SIGNING PLANS

<p>60631225P CITY OF MADISON, DANE COUNTY, WI CONTRACT NO: 60631225C</p>	<p>REMOVAL PLAN: E. WASHINGTON AVENUE AT MILWAUKEE STREET BUS RAPID TRANSIT CITY OF MADISON</p>
<p>PLAN REVISION 9 DATE 1/25/24 BY</p>	<p>DESIGNED BY: STRAND DATE: 2024-02-01 SCALE: 1"=20' FT</p>
<p>60631225P R12-E</p>	



REMOVALS LEGEND	
	REMOVING PAVEMENT (ASPHALT PAID AS "EXCAVATION COMMON", CONCRETE AS "REMOVING CONCRETE PAVEMENT")
	REMOVING CONCRETE CURB (PAID AS "REMOVING CONCRETE CURB & GUTTER")
	REMOVING CONCRETE CURB & GUTTER (PAID AS "REMOVING CONCRETE PAVEMENT" WHEN ADJACENT TO CONCRETE PAVEMENT)
	REMOVING CONCRETE SIDEWALK & DRIVEWAY (PAID AS REMOVING CONCRETE SIDEWALK)
	SAWING PAVEMENT (SEE QUANTITIES FOR ASPHALT/CONCRETE)
	REMOVING FENCE
	REMOVING TREE (PAID AS CLEARING & GRUBBING)
	REMOVING VEGETATION (PAID AS CLEARING & GRUBBING)
	INLET PROTECTION, TYPE D - COMPLETE (UNLESS OTHERWISE NOTED)
	REMOVE STREET LIGHT POLE & BASE, TRAFFIC SIGNAL POLE & BASE, & CABINET (PAID AS "REMOVING TRAFFIC SIGNALS (LOCATION)" AND "REMOVING BASE")
	REMOVING PULL BOX
	REMOVING STORM SEWER XX-INCH
	REMOVING INLET, REMOVING CATCHBASIN (PAID AS REMOVING INLET)
	ABANDON CONDUIT
	ABANDONING SEWER (ABANDON PIPE WITH SLURRY)

PLAN REVISION	CTL	DATE	BY
2	1/25/24	11/11/22	DIC
1	ADDENDUM 3		
MARK	REVISION	2024-02-01	

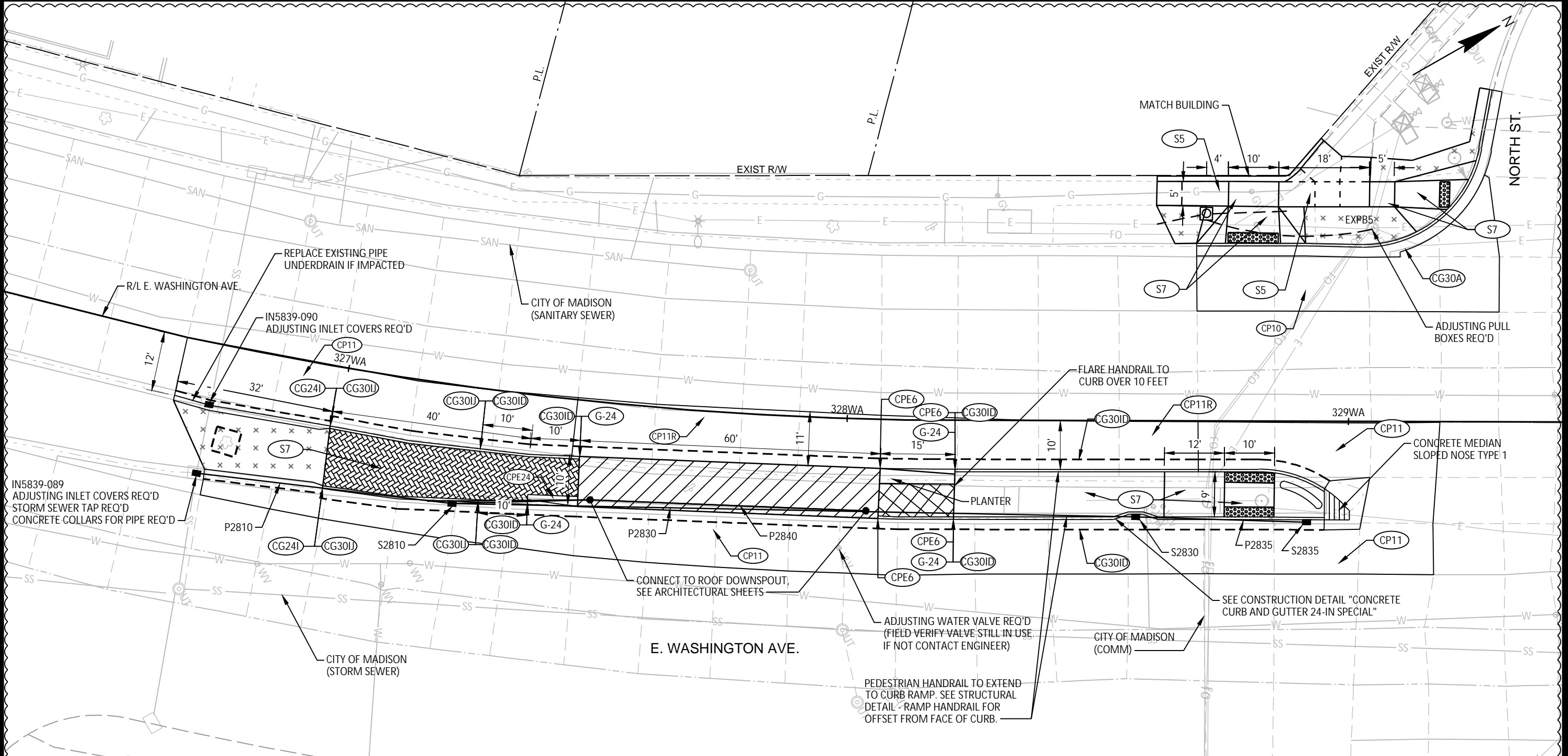
Designed By: STRAND Date: 2024-02-01  
60631225P Scale: 1"=20' FT

60631225P  
 REMOVAL PLAN: E. WASHINGTON AVENUE AT MILWAUKEE STREET  
 CITY OF MADISON, DANE COUNTY, WI  
 BUS RAPID TRANSIT  
 CITY OF MADISON  
 CONTRACT NO: 60631225C

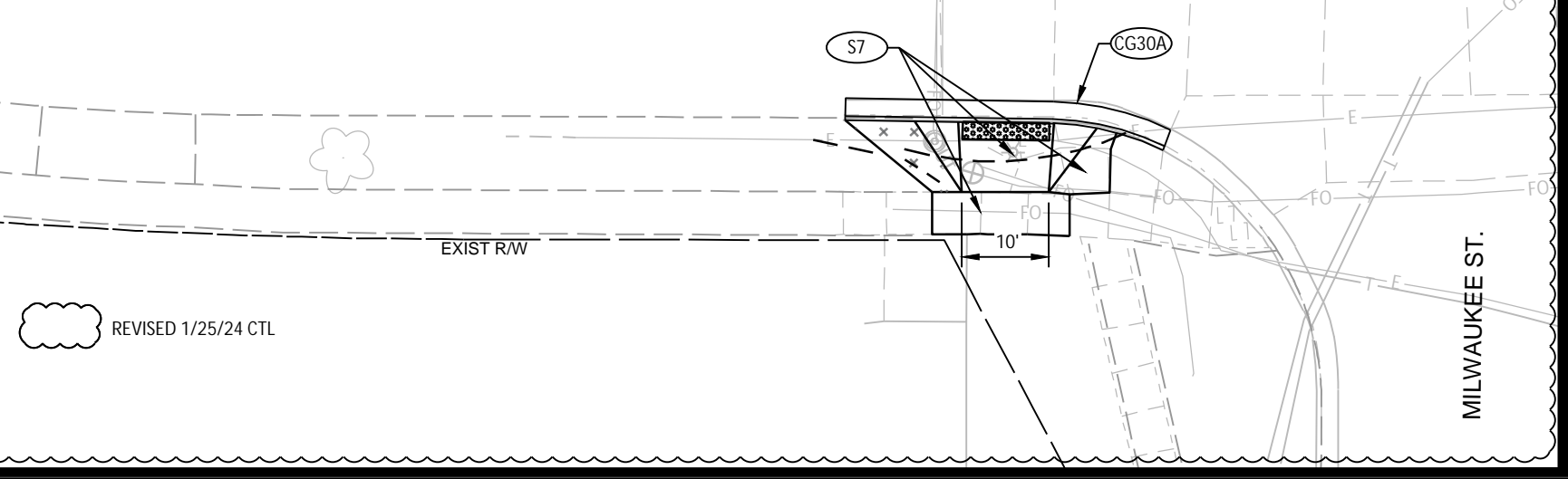


60631225P  
 R13-E



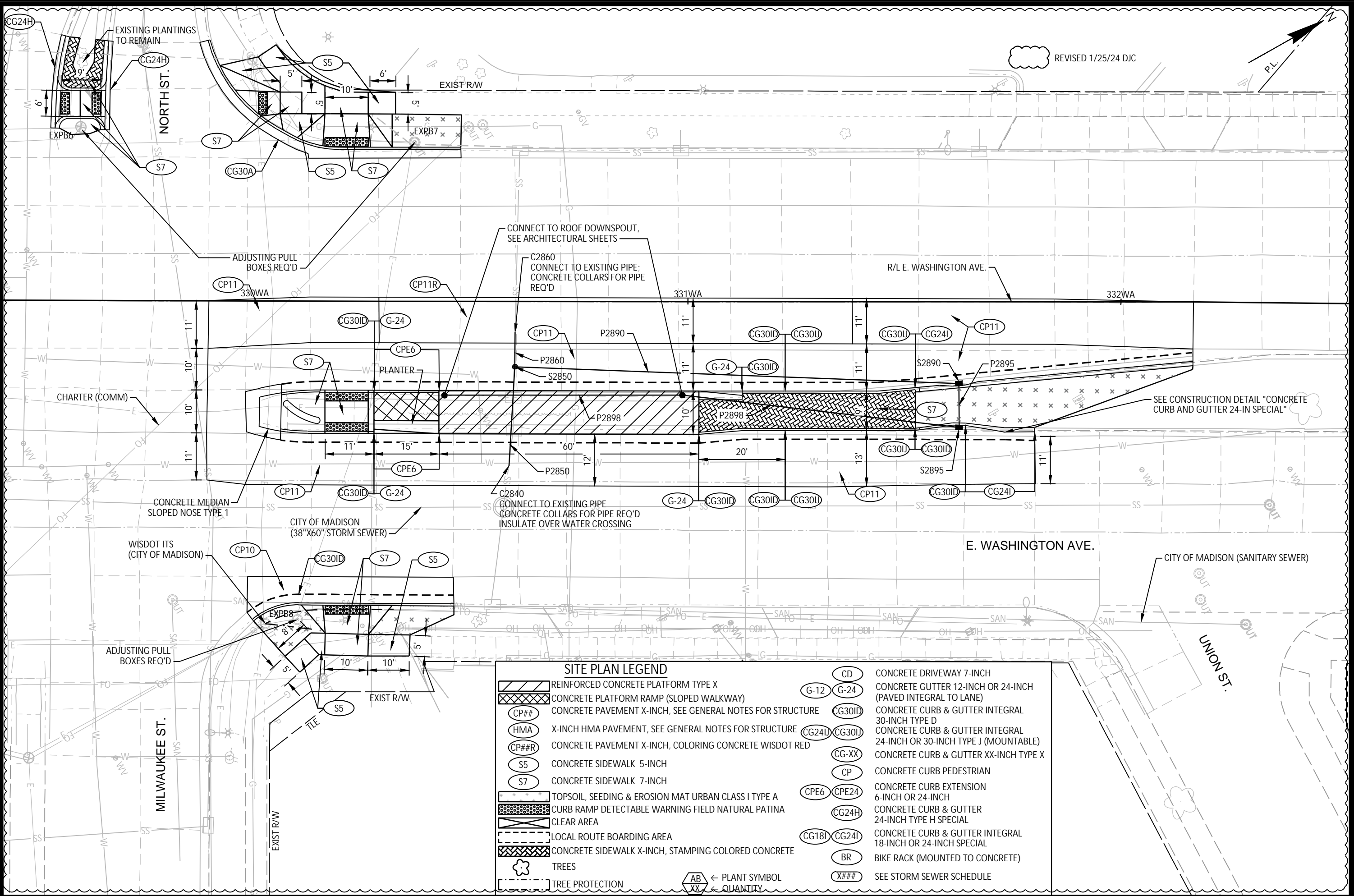


SITE PLAN LEGEND	
	REINFORCED CONCRETE PLATFORM TYPE X
	CONCRETE PLATFORM RAMP (SLOPED WALKWAY)
	CONCRETE PAVEMENT X-INCH, SEE GENERAL NOTES FOR STRUCTURE
	X-INCH HMA PAVEMENT, SEE GENERAL NOTES FOR STRUCTURE
	CONCRETE PAVEMENT X-INCH, COLORING CONCRETE WISDOT RED
	CONCRETE SIDEWALK 5-INCH
	CONCRETE SIDEWALK 7-INCH
	TOPSOIL, SEEDING & EROSION MAT URBAN CLASS I TYPE A
	CURB RAMP DETECTABLE WARNING FIELD NATURAL PATINA
	CLEAR AREA
	LOCAL ROUTE BOARDING AREA
	CONCRETE SIDEWALK X-INCH, STAMPING COLORED CONCRETE
	TREES
	TREE PROTECTION
	← PLANT SYMBOL
	← QUANTITY
	CONCRETE DRIVEWAY 7-INCH
	CONCRETE GUTTER 12-INCH OR 24-INCH (PAVED INTEGRAL TO LANE)
	CONCRETE CURB & GUTTER INTEGRAL 30-INCH TYPE D
	CONCRETE CURB & GUTTER INTEGRAL 24-INCH OR 30-INCH TYPE J (MOUNTABLE)
	CONCRETE CURB & GUTTER XX-INCH TYPE X
	CONCRETE CURB PEDESTRIAN
	CONCRETE CURB EXTENSION 6-INCH OR 24-INCH
	CONCRETE CURB & GUTTER 24-INCH TYPE H SPECIAL
	CONCRETE CURB & GUTTER INTEGRAL 18-INCH OR 24-INCH SPECIAL
	BIKE RACK (MOUNTED TO CONCRETE)
	SEE STORM SEWER SCHEDULE

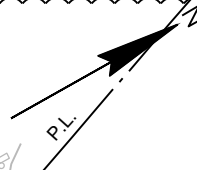


PLAN REVISION 9	1/25/24	CTL
ADDENDUM 3	11/14/22	CTL
REVISION	2024-02-01	DATE
DESIGNED BY: STRAND	60631225P	BY
		1"=20 FT

60631225P  
 CITY OF MADISON, DANE COUNTY, WI  
 CONTRACT NO: 60631225C  
 CITY OF MADISON  
 BUS RAPID TRANSIT  
 SITE PLAN: E. WASHINGTON AVENUE AT MILWAUKEE STREET  
 60631225P  
 P12-E



REVISED 1/25/24 DJC



SITE PLAN LEGEND	
	REINFORCED CONCRETE PLATFORM TYPE X
	CONCRETE PLATFORM RAMP (SLOPED WALKWAY)
	CONCRETE PAVEMENT X-INCH, SEE GENERAL NOTES FOR STRUCTURE
	X-INCH HMA PAVEMENT, SEE GENERAL NOTES FOR STRUCTURE
	CONCRETE PAVEMENT X-INCH, COLORING CONCRETE WISDOT RED
	CONCRETE SIDEWALK 5-INCH
	CONCRETE SIDEWALK 7-INCH
	TOPSOIL, SEEDING & EROSION MAT URBAN CLASS I TYPE A
	CURB RAMP DETECTABLE WARNING FIELD NATURAL PATINA
	CLEAR AREA
	LOCAL ROUTE BOARDING AREA
	CONCRETE SIDEWALK X-INCH, STAMPING COLORED CONCRETE
	TREES
	TREE PROTECTION
	CONCRETE DRIVEWAY 7-INCH
	CONCRETE GUTTER 12-INCH OR 24-INCH (PAVED INTEGRAL TO LANE)
	CONCRETE GUTTER 12-INCH OR 24-INCH (PAVED INTEGRAL TO LANE)
	CONCRETE CURB & GUTTER INTEGRAL 30-INCH TYPE D
	CONCRETE CURB & GUTTER INTEGRAL 24-INCH OR 30-INCH TYPE J (MOUNTABLE)
	CONCRETE CURB & GUTTER XX-INCH TYPE X
	CONCRETE CURB & GUTTER XX-INCH TYPE X
	CONCRETE CURB PEDESTRIAN
	CONCRETE CURB EXTENSION 6-INCH OR 24-INCH
	CONCRETE CURB EXTENSION 6-INCH OR 24-INCH
	CONCRETE CURB & GUTTER 24-INCH TYPE H SPECIAL
	CONCRETE CURB & GUTTER INTEGRAL 24-INCH OR 30-INCH TYPE J (MOUNTABLE)
	CONCRETE CURB & GUTTER INTEGRAL 18-INCH OR 24-INCH SPECIAL
	CONCRETE CURB & GUTTER INTEGRAL 18-INCH OR 24-INCH SPECIAL
	BIKE RACK (MOUNTED TO CONCRETE)
	SEE STORM SEWER SCHEDULE

PLAN REVISION 9	DIC	1/25/24	DIC
PLAN REVISION 4	DIC	4/5/23	DIC
ADDENDUM 3	DIC	11/14/22	DIC
REVISION	DIC	DATE	BY
MARK			

Designed By: STRAND Date: 2024-02-01 Scale: 1"=20' FT  
60631225P

SITE PLAN: E. WASHINGTON AVENUE AT MILWAUKEE STREET  
CITY OF MADISON, DANE COUNTY, WI  
BUS RAPID TRANSIT  
CONTRACT NO: 60631225C

60631225P  
P13-E

FILE NAME: C:\P\WORKING\AECOM\_DS20\_NA\_2019\LN\2114\N0107215\050237B\_PN.DWG  
LAYOUT NAME: 050237.PLT  
LAST PLOT DATE: 2024-02-01





STATION & OFFSET TABLE						
POINT	STATION	OFFSET	Y COORDS	X COORDS	ELEVATION	COMMENT
MIA1	328+69.58 'WA'	34.91' LT	492155.89	830540.36	861.49	FL
MIA2	328+69.71 'WA'	21.94' LT	492149.57	830551.69	862.00	MATCH
MIA3	328+91.31 'WA'	34.99' LT	492174.80	830551.06	861.40	FL
MIA4	328+91.30 'WA'	32.99' LT	492173.80	830552.79	861.53	EOP
MIA5	329+02.71 'WA'	34.76' LT	492184.59	830556.91	861.36	FL
MIA6	329+10.21 'WA'	32.84' LT	492190.14	830562.30	861.49	EOP
MIA7	329+10.21 'WA'	33.88' LT	492190.66	830561.40	861.43	EOP
MIA8	329+29.94 'WA'	21.89' LT	492201.86	830581.59	861.71	MATCH
MIA9	329+29.97 'WA'	32.92' LT	492207.34	830572.02	861.36	MATCH
MIA10	329+27.89 'WA'	48.68' LT	492213.36	830557.30	860.82	MATCH
MIA11	329+26.89 'WA'	49.31' LT	492212.80	830556.26	860.78	MATCH
MIA12	329+26.28 'WA'	54.47' LT	492214.83	830551.47	860.63	FL
MIA13	329+28.41 'WA'	66.18' LT	492222.48	830542.36	860.40	MATCH
MIA14	329+00.95 'WA'	60.53' LT	492195.83	830533.66	0.00	RADIUS*
MIA15	328+91.48 'WA'	21.94' LT	492168.48	830562.49	861.96	MATCH
MIC1	326+67.23 'WA'	0.00'	491971.73	830457.06	862.34	MATCH
MIC2	326+67.24 'WA'	11.87' RT	491963.76	830465.86	862.08	FL
MIC3	326+74.17 'WA'	0.14' LT	491977.03	830461.55	862.35	MATCH
MIC4	326+74.37 'WA'	12.36' RT	491968.96	830471.09	862.03	FL L.P.
MIC5	326+75.85 'WA'	26.05' RT	491961.11	830482.42	862.28	FL
MIC6	326+75.91 'WA'	30.23' RT	491958.41	830485.61	862.40	MATCH
MIC7	326+98.23 'WA'	11.96' RT	491987.75	830486.44	862.12	FL
MIC8	326+98.26 'WA'	12.46' RT	491987.45	830486.84	862.62	BOC
MIC9	326+98.80 'WA'	24.00' RT	491980.58	830496.13	862.99	BOC
MIC10	326+98.83 'WA'	24.50' RT	491980.29	830496.53	862.49	FL
MIC11	327+05.56 'WA'	24.31' RT	491985.82	830500.76	862.55	FL
MIC12	327+05.53 'WA'	30.49' RT	491981.93	830505.57	862.62	MATCH
MIC13	327+14.13 'WA'	12.38' RT	492000.10	830496.85	862.19	FL
MIC14	327+13.43 'WA'	24.17' RT	491992.27	830505.70	862.52	FL
MIC15	327+23.98 'WA'	23.09' RT	492001.55	830511.50	862.48	FL L.P.
MIC16	327+23.84 'WA'	30.70' RT	491996.82	830517.47	862.61	MATCH
MIC17	327+37.79 'WA'	11.89' RT	492019.57	830510.98	862.28	FL
MIC18	327+38.51 'WA'	21.86' RT	492014.28	830519.46	862.54	FL
MIC19	327+46.08 'WA'	0.46' LT	492033.59	830505.87	862.47	MATCH
MIC20	327+46.09 'WA'	11.32' RT	492026.74	830515.45	862.32	FL

STATION & OFFSET TABLE						
POINT	STATION	OFFSET	Y COORDS	X COORDS	ELEVATION	COMMENT
MIC21	327+47.44 'WA'	0.49' LT	492034.70	830506.63	862.47	MATCH
MIC22	327+47.62 'WA'	11.22' RT	492028.06	830516.28	862.32	FL
MIC23	327+47.62 'WA'	11.22' RT	492028.06	830516.28	863.45	TOP
MIC24	327+48.21 'WA'	21.20' RT	492022.76	830524.76	863.60	TOP
MIC25	327+48.20 'WA'	21.20' RT	492022.76	830524.76	862.58	FL
MIC26	327+48.33 'WA'	31.04' RT	492017.17	830532.85	862.73	MATCH
MIC27	328+06.67 'WA'	0.78' LT	492084.38	830538.75	862.64	MATCH
MIC28	328+06.78 'WA'	9.80' RT	492079.06	830547.89	862.56	FL
MIC29	328+06.78 'WA'	9.80' RT	492079.05	830547.89	863.69	TOP
MIC30	328+06.72 'WA'	12.80' RT	492077.47	830550.44	863.73	TOP
MIC31	328+06.59 'WA'	19.79' RT	492073.76	830556.37	863.84	TOP
MIC32	328+06.59 'WA'	19.79' RT	492073.76	830556.37	862.82	FL H.P.
MIC33	328+06.40 'WA'	30.94' RT	492067.87	830565.83	862.86	MATCH
MIC34	328+21.55 'WA'	9.81' RT	492092.00	830555.40	862.62	FL
MIC35	328+21.53 'WA'	10.31' RT	492091.74	830555.83	863.12	BOC
MIC36	328+21.45 'WA'	12.81' RT	492090.43	830557.96	863.16	
MIC37	328+21.24 'WA'	19.31' RT	492087.02	830563.50	863.26	BOC
MIC38	328+21.22 'WA'	19.81' RT	492086.76	830563.93	862.76	FL
MIC39	328+44.09 'WA'	0.08' RT	492116.41	830558.12	862.68	MATCH
MIC40	328+44.07 'WA'	9.76' RT	492111.59	830566.52	862.71	FL H.P.
MIC41	328+53.10 'WA'	19.73' RT	492114.49	830579.66	862.61	FL
MIC42	328+57.66 'WA'	30.59' RT	492113.07	830591.34	862.76	MATCH
MIC43	328+63.30 'WA'	10.20' RT	492128.08	830576.43	863.13	BOC
MIC44	328+63.20 'WA'	19.20' RT	492123.53	830584.20	863.07	BOC
MIC45	328+69.96 'WA'	0.18' RT	492138.82	830571.03	862.65	MATCH
MIC46	328+70.06 'WA'	9.68' RT	492134.20	830579.33	862.61	FL
MIC47	328+82.14 'WA'	9.64' RT	492144.71	830585.28	862.56	FL
MIC48	328+83.63 'WA'	26.86' RT	492137.48	830600.97	862.63	RADIUS*
MIC49	328+82.22 'WA'	33.39' RT	492133.01	830605.95	0.00	RADIUS*
MIC50	328+87.16 'WA'	12.79' RT	492147.51	830590.51	863.02	RADIUS*
MIC51	328+93.94 'WA'	16.66' RT	492151.48	830597.23	862.97	RADIUS*
MIC52	328+91.70 'WA'	19.66' RT	492148.04	830598.72	862.43	FL L.P.
MIC53	328+91.76 'WA'	30.49' RT	492142.74	830608.16	862.69	MATCH
MIC54	328+95.21 'WA'	13.51' RT	492154.15	830595.12	862.50	FL
MIC55	328+95.20 'WA'	19.67' RT	492151.09	830600.46	862.45	FL

STATION & OFFSET TABLE						
POINT	STATION	OFFSET	Y COORDS	X COORDS	ELEVATION	COMMENT
MIC56	329+00.20 'WA'	17.78' RT	492156.37	830601.30	862.48	FL
MIC57	329+00.20 'WA'	19.68' RT	492155.42	830602.95	862.47	FL
MIC58	329+04.30 'WA'	11.14' RT	492163.22	830597.57	862.55	EOP
MIC59	329+02.32 'WA'	21.50' RT	492156.36	830605.58	862.48	EOP
MIC60	329+18.26 'WA'	0.15' RT	492180.79	830594.94	862.47	MATCH
MIC61	329+17.53 'WA'	11.12' RT	492174.72	830604.11	862.50	MATCH
MIC62	329+16.92 'WA'	20.32' RT	492169.63	830611.80	862.53	MATCH
MIC63	329+17.09 'WA'	30.49' RT	492164.73	830620.72	862.63	MATCH
MIC64	328+56.10 'WA'	18.22' RT	492117.84	830579.83	863.07	BOC
MIC65	328+59.10 'WA'	18.22' RT	492120.45	830581.31	863.06	BOC
MIC66	328+62.10 'WA'	19.71' RT	492122.32	830584.09	862.57	FL
MIF1	328+60.99 'WA'	81.20' RT	492090.88	830636.95	861.84	MATCH
MIF2	328+84.89 'WA'	81.43' RT	492111.52	830648.99	861.76	FL
MIF3	328+97.70 'WA'	84.51' RT	492121.12	830658.02	861.69	MATCH
MIF4	328+84.23 'WA'	112.41' RT	492095.59	830675.57	0.00	RADIUS*

\* POINTS USED FOR CENTER MAY HAVE ZERO OR APPROXIMATED ELEVATIONS - THESE POINTS ARE INCLUDED IN THE TABLE FOR HORIZONTAL LOCATION. THE VERTICAL ELEVATION OF THESE POINTS ARE NOT INTENDED FOR CONSTRUCTION.

 REVISED 1/26/24 BMR

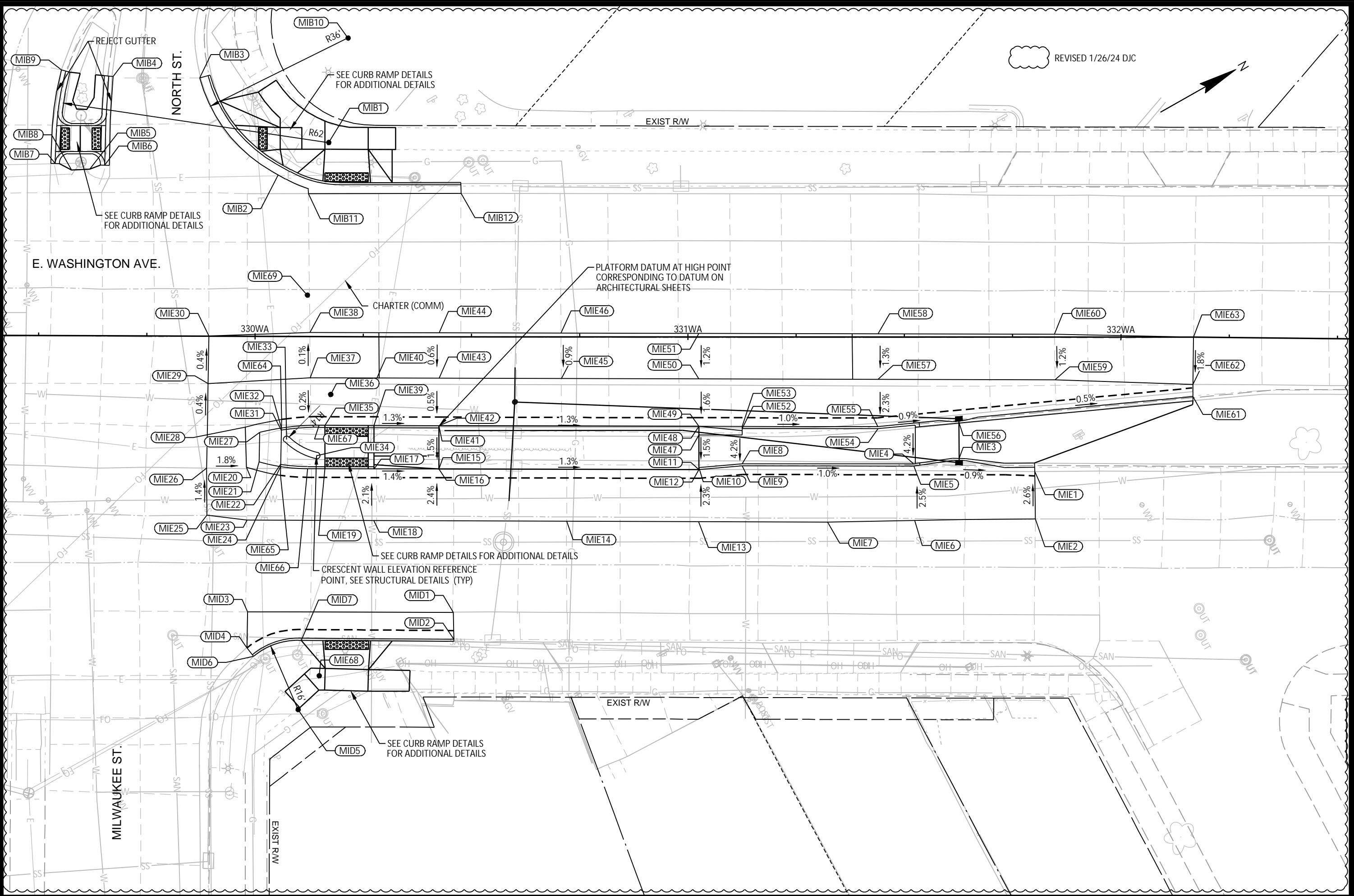
1/26/24	BMR
4/25/23	DJC
2/8/23	CTL
DATE	BY
PLAN REVISION 9	
PLAN REVISION 4	
PLAN REVISION 1	
REVISION	
MARK	
Designed By: STRAND	Date: 2024-02-01
60631225P	
Scale: 1"=20 FT	

60631225P  
 GRADING PLAN: E. WASHINGTON AVENUE AT MILWAUKEE STREET  
 BUS RAPID TRANSIT  
 CITY OF MADISON  
 CITY OF MADISON, DANE COUNTY, WI  
 CONTRACT NO: 60631225C



60631225P  
 G12A-E





REVISED 1/26/24 DJC

MARK	REVISION	DATE	BY
4	PLAN REVISION 9	1/26/24	DJC
3	PLAN REVISION 4	4/5/23	DJC
2	PLAN REVISION 1	2/8/23	CTL
1	ADDENDUM 3	11/02/22	DJC

Designed By: STRAND Date: 2024-02-01  
60631225P

60631225P  
 GRADING PLAN: E. WASHINGTON AVENUE AT MILWAUKEE STREET  
 CITY OF MADISON, DANE COUNTY, WI  
 BUS RAPID TRANSIT  
 CONTRACT NO: 60631225C



60631225P  
 G13-E

REVISED 1/26/24 DJC

STATION & OFFSET TABLE						
POINT	STATION	OFFSET	Y COORDS	X COORDS	ELEVATION	COMMENT
MIB1	330+16.87 WA	44.78' LT	492288.70	830604.80	861.08	RADIUS*
MIB2	330+05.22 WA	37.31' LT	492274.88	830605.51	860.79	MATCH
MIB3	329+87.00 WA	59.66' LT	492270.13	830577.06	860.61	MATCH
MIB4	329+66.98 WA	59.92' LT	492252.87	830566.91	860.90	MATCH
MIB5	329+61.66 WA	38.50' LT	492237.64	830582.88	861.55	MATCH
MIB6	329+65.14 WA	39.42' LT	492241.12	830583.81	861.17	MATCH
MIB7	329+53.66 WA	39.78' LT	492231.32	830577.81	861.27	MATCH
MIB8	329+57.47 WA	38.29' LT	492233.89	830580.99	861.57	MATCH
MIB9	329+55.07 WA	61.38' LT	492243.25	830559.75	860.92	MATCH
MIB10	330+21.25 WA	68.98' LT	492304.50	830585.94	0.00	RADIUS*
MIB11	330+12.19 WA	33.02' LT	492278.81	830612.69	860.78	MATCH
MIB12	330+47.54 WA	33.15' LT	492309.52	830630.01	860.49	MATCH
MID1	330+45.83 WA	63.69' RT	492260.27	830713.40	860.88	MATCH
MID2	330+45.99 WA	69.88' RT	492257.36	830718.86	860.61	MATCH
MID3	329+98.50 WA	63.67' RT	492218.99	830689.87	861.63	MATCH
MID4	329+98.32 WA	71.94' RT	492214.74	830696.97	861.52	MATCH
MID5	330+10.20 WA	86.21' RT	492217.99	830715.26	0.00	RADIUS*
MID6	329+99.93 WA	73.94' RT	492215.14	830699.51	861.84	MATCH
MID7	330+10.91 WA	70.21' RT	492226.54	830701.72	861.71	BOC
MIE1	331+80.15 WA	31.09' RT	492393.19	830751.29	859.65	MATCH
MIE2	331+80.27 WA	42.03' RT	492387.90	830760.88	859.93	MATCH
MIE3	331+62.63 WA	28.02' RT	492379.47	830739.98	860.34	BOC
MIE4	331+52.13 WA	29.31' RT	492369.70	830735.93	860.39	BOC
MIE5	331+52.17 WA	29.81' RT	492369.48	830736.38	859.89	FL
MIE6	331+52.41 WA	42.40' RT	492363.49	830747.45	860.21	MATCH
MIE7	331+32.25 WA	42.79' RT	492345.76	830737.84	860.42	MATCH
MIE8	331+12.51 WA	29.28' RT	492335.25	830716.36	860.79	BOC
MIE9	331+12.51 WA	29.79' RT	492335.00	830716.80	860.29	FL
MIE10	331+02.52 WA	30.18' RT	492326.11	830712.21	860.96	BOC
MIE11	331+02.51 WA	30.68' RT	492325.86	830712.65	861.58	TOP
MIE12	331+02.51 WA	30.68' RT	492325.86	830712.65	860.45	FL
MIE13	331+02.45 WA	42.70' RT	492319.88	830723.07	860.73	MATCH
MIE14	330+71.99 WA	42.60' RT	492293.42	830707.96	861.14	MATCH
MIE15	330+42.51 WA	30.57' RT	492273.72	830682.96	862.36	TOP

STATION & OFFSET TABLE						
POINT	STATION	OFFSET	Y COORDS	X COORDS	ELEVATION	COMMENT
MIE16	330+42.51 WA	30.57' RT	492273.72	830682.96	861.24	FL
MIE17	330+27.58 WA	30.55' RT	492260.66	830675.53	861.45	FL
MIE18	330+27.57 WA	42.47' RT	492254.75	830685.88	861.71	MATCH
MIE19	330+16.27 WA	30.56' RT	492250.84	830669.93	861.58	FL
MIE20	329+98.13 WA	30.27' RT	492235.23	830660.68	861.84	EOP
MIE21	330+01.01 WA	29.01' RT	492238.35	830661.02	861.77	FL
MIE22	330+06.00 WA	29.60' RT	492242.40	830664.00	862.22	BOC
MIE23	329+98.28 WA	42.46' RT	492229.31	830671.35	862.04	MATCH
MIE24	330+05.99 WA	30.10' RT	492242.14	830664.44	861.72	FL
MIE25	329+89.00 WA	41.40' RT	492221.78	830665.83	862.16	MATCH
MIE26	329+88.89 WA	30.53' RT	492227.08	830656.33	862.01	MATCH
MIE27	330+01.13 WA	22.21' RT	492241.83	830655.17	861.93	FL
MIE28	329+97.79 WA	20.98' RT	492239.54	830652.45	861.96	MATCH
MIE29	329+89.20 WA	10.98' RT	492237.03	830639.50	861.99	MATCH
MIE30	329+89.37 WA	0.05' LT	492242.65	830630.02	861.95	MATCH
MIE31	330+06.14 WA	21.71' RT	492246.43	830657.22	862.36	BOC
MIE32	330+06.15 WA	21.20' RT	492246.69	830656.79	861.86	FL
MIE33	330+07.37 WA	23.82' RT	492246.45	830659.66	862.31	RADIUS*
MIE34	330+14.27 WA	27.56' RT	492250.58	830666.33	861.90	RADIUS*
MIE35	330+16.23 WA	20.51' RT	492255.78	830661.18	861.73	FL
MIE36	330+17.48 WA	13.42' RT	492260.38	830655.65	861.74	RADIUS*
MIE37	330+12.80 WA	9.56' RT	492258.23	830649.97	861.80	EOP
MIE38	330+12.65 WA	0.94' LT	492263.31	830640.78	861.79	MATCH
MIE39	330+27.57 WA	20.52' RT	492265.63	830666.81	861.59	FL
MIE40	330+28.17 WA	9.55' RT	492271.59	830657.58	861.62	EOP
MIE41	330+42.50 WA	20.58' RT	492278.64	830674.26	862.51	TOP
MIE42	330+42.50 WA	20.57' RT	492278.64	830674.25	861.40	FL
MIE43	330+42.53 WA	9.58' RT	492284.09	830664.70	861.46	EOP
MIE44	330+42.54 WA	0.93' LT	492289.28	830655.57	861.52	MATCH
MIE45	330+70.77 WA	9.63' RT	492308.63	830678.68	861.19	EOP
MIE46	330+70.66 WA	0.88' LT	492313.72	830669.48	861.29	MATCH
MIE47	331+02.51 WA	22.68' RT	492329.80	830705.69	861.70	BOC
MIE48	331+02.50 WA	20.68' RT	492330.78	830703.95	861.73	TOP
MIE49	331+02.50 WA	20.68' RT	492330.78	830703.94	860.73	FL

STATION & OFFSET TABLE						
POINT	STATION	OFFSET	Y COORDS	X COORDS	ELEVATION	COMMENT
MIE50	331+02.53 WA	9.69' RT	492336.23	830694.39	860.91	EOP
MIE51	331+02.55 WA	0.82' LT	492341.43	830685.26	861.03	
MIE52	331+12.51 WA	21.18' RT	492339.24	830709.31	861.13	BOC
MIE53	331+12.51 WA	20.68' RT	492339.48	830708.87	860.63	FL
MIE54	331+43.90 WA	21.17' RT	492366.55	830724.78	860.82	BOC
MIE55	331+43.87 WA	20.67' RT	492366.78	830724.33	860.32	FL
MIE56	331+62.63 WA	19.89' RT	492383.47	830732.91	860.72	BOC
MIE57	331+43.89 WA	9.77' RT	492372.17	830714.86	860.57	EOP
MIE58	331+43.91 WA	0.75' LT	492377.37	830705.73	860.71	MATCH
MIE59	331+84.79 WA	9.84' RT	492407.71	830735.10	860.25	EOP
MIE60	331+84.65 WA	0.67' LT	492412.77	830725.88	860.38	MATCH
MIE61	332+16.62 WA	13.72' RT	492433.48	830754.18	859.97	MATCH
MIE62	332+16.65 WA	10.89' RT	492434.91	830751.73	859.97	MATCH
MIE63	332+16.75 WA	0.00'	492440.36	830742.30	860.17	MATCH
MIE64	330+06.18 WA	19.17' RT	492247.72	830655.04	861.87	EOP
MIE65	330+05.95 WA	32.12' RT	492241.11	830666.17	861.75	EOP
MIE66	330+12.21 WA	30.57' RT	492247.31	830667.92	861.63	FL
MIE67	330+14.84 WA	20.51' RT	492254.58	830660.49	861.75	FL
MIE68	330+15.05 WA	78.43' RT	492226.05	830710.90	0.00	R=57.5' *
MIE69	330+12.06 WA	9.54' LT	492267.06	830633.02	0.00	R=39.6' *

\* POINTS USED FOR CENTER MAY HAVE ZERO OR APPROXIMATED ELEVATIONS - THESE POINTS ARE INCLUDED IN THE TABLE FOR HORIZONTAL LOCATION. THE VERTICAL ELEVATION OF THESE POINTS ARE NOT INTENDED FOR CONSTRUCTION.

PLAN REVISION 9	DJC	1/26/24
PLAN REVISION 4	DJC	5/4/23
PLAN REVISION 1	CTI	2/8/23
REVISION	DATE	BY
MARK	DATE	BY

60631225P  
 GRADING PLAN: E. WASHINGTON AVENUE AT MILWAUKEE STREET  
 BUS RAPID TRANSIT  
 CITY OF MADISON  
 CITY OF MADISON, DANE COUNTY, WI  
 CONTRACT NO: 60631225C



60631225P

G13A-E

# STORM SEWER SCHEDULE

PROJECT NAME	SHEET NO.
PROJECT NO. 12777	U-STM
STORM SEWER SCHEDULE	
CITY OF MADISON	

## PROPOSED STORM STRUCTURES

STRUC. NO.	STATION	LOCATION (OFFSET)	TYPE/CASTING	TOP OF CASTING	E.I.	DEPTH	NOTES
<b>SITE 27 (FOURTH)</b>							
IN5740-085	310+41.96	RT 10.90	EX. INLET	863.44	855.49	7.95	STORM SEWER TAP REQ'D

## PROPOSED STORM PIPES

PIPE NO.	FROM (DNSTM)	TO (UPSTM)	DISCH. E.I.	INLET E.I.	PLAN (PAY) LGTH (FT)	SLOPE (%)	PIPE SIZE	TYPE
<b>SITE 27 (FOURTH)</b>								
P2700	IN5740-085	PLATFORM ROOF DRAIN	857.62	861.70	136	3.00%	8"	PVC

## SITE 28 (MILWAUKEE)

IN5839-090	326+75.01	LT 4.1	EX. INLET	862.54			ADJUSTING INLET COVERS REQ'D
IN5839-089	326+74.90	RT 9.9	EX. INLET	862.8	855.74		ADJUSTING INLET COVERS REQ'D; STORM SEWER TAP REQ'D; CONCRETE COLLARS FOR PIPE REQ'D
S2810	327+25.65	RT 8.6	2X3/HM	862.98	856.00	6.98	CONNECT UNDERDRAIN INTO STRUCTURE
S2830	328+61.26	RT 6.2	2X3/H	863.06	856.68	6.38	
S2835	328+95.36	RT 7.3	2X3/H	862.93	858.23	4.71	
C2840	330+62.36	RT 25.6	CONNECTION		850.73		CONNECT TO EXISTING PIPE; CONCRETE COLLARS FOR PIPE REQ'D
S2850	330+63.71	RT 2.7	4-FT/J-S	861.26	850.85	10.41	FLAT TOP SLAB REQ'D
C2860	330+63.79	LT 5.3	CONNECTION		851.12		CONNECT TO EXISTING PIPE; CONCRETE COLLARS FOR PIPE REQ'D
S2890	331+66.30	RT 6.6	2X3/H	860.72	855.05	5.67	
S2895	331+66.34	RT 16.7	2X3/H	860.34	855.31	5.03	CONNECT UNDERDRAIN INTO STRUCTURE

## SITE 28 (MILWAUKEE)

P2810	IN5839-089	S2810	855.74	856.00	51	0.50%	15"	RCP C-III
P2830	S2810	S2830	856.00	856.68	136	0.50%	12"	RCP C-III
P2835	S2830	S2835	858.06	858.23	34	0.50%	12"	RCP C-III
P2840	S2810	PLATFORM ROOF DRAIN	859.02	860.67	83	2.00%	8"	PVC
P2850	C2840	S2850	850.73	850.85	23	0.50%	18"	RCP C-III
P2860	S2850	C2860	851.11	851.15	8	0.50%	18"	RCP C-III
P2890	S2850	S2890	854.05	854.56	103	0.50%	12"	RCP C-III
P2895	S2890	S2895	854.56	854.61	10	0.50%	12"	RCP C-III
P2898	S2895	PLATFORM ROOF DRAIN	854.61	857.00	119	2.00%	8"	PVC

## SITE 29 (MARQUETTE)

C2900	352+19.91	LT 18.9	CONNECTION		845.08		CONNECT TO EXISTING PIPE; CONCRETE COLLARS FOR PIPE REQ'D
S2910	352+19.98	LT 12.5	4-FT/J-S	852.68	844.61	8.07	FLAT TOP SLAB REQ'D
C2920	352+24.09	RT 15.7	CONNECTION		844.47		CONNECT TO EXISTING PIPE; CONCRETE COLLARS FOR PIPE REQ'D
S2930	351+00.94	RT 11.2	2X3/HM	853.76	849.2	4.56	CONNECT UNDERDRAIN INTO STRUCTURE (2)
S2940	350+99.92	RT 1.9	2X3/HM	853.5	849.15	4.35	CONNECT UNDERDRAIN INTO STRUCTURE (2)
S2950	352+32.91	RT 7.7	2X3/H	853.36	848.48	4.88	
S2960	352+33.01	LT 6.3	4-FT/H	853.06	848.41	4.65	FLAT TOP SLAB REQ'D

## SITE 29 (MARQUETTE)

P2900	S2910	C2900	845.05	845.08	6	0.50%	18"	RCP C-III
P2910	C2920	S2910	844.47	844.61	29	0.48%	24"	RCP C-III
P2930	S2940	S2930	849.15	849.2	9	0.56%	12"	RCP C-III
P2940	S2910	S2940	848.55	849.15	120	0.50%	12"	RCP C-III
P2950	S2960	S2950	848.41	848.48	14	0.50%	12"	RCP C-III
P2960	S2910	S2960	848.34	848.41	14	0.50%	12"	RCP C-III
P2970	S2950	PLATFORM ROOF DRAIN	848.48	849.87	70	2.00%	8"	PVC

REVISED 1/26/24 CTL

PLAN REVISION 9	DATE	BY
REVISION	2024-02-01	
MARK	DESIGNED BY: STRAND	DATE: 2024-02-01
	60631225P	Scale: 1"=20 FT

60631225P  
 CITY OF MADISON, DANE COUNTY, WI  
 CONTRACT NO: 60631225C



60631225P  
P31B-E



# STORM SEWER SCHEDULE

PROJECT NAME	SHEET NO.
PROJECT NO. 12777	U-STM
STORM SEWER SCHEDULE	
CITY OF MADISON	

## STORM STRUCTURE REMOVALS

## STORM PIPE REMOVALS

STRUC. NO.	STATION	ALIGNMENT	LOCATION (OFFSET)	TYPE/CASTING	TOP OF CASTING	E.I.	DEPTH	PIPE NO.	FROM (DNSTM)	TO (UPSTM)	DISCH. E.I.	INLET E.I.	PLAN (PAY) LGTH (FT)	SLOPE (%)	PIPE SIZE (IN)	TYPE	NOTES
<b>SITE 24 (PATERSON)</b>																	
R5347-078	234+76	E_Washington	RT 0.3	INLET	849.03	843.53	5.5	RP5347-079	R5347-078	R5347-079	844.28	844.36	9.00	0.89%	12	RCP	
R5347-079	234+68	E_Washington	LT 2	INLET	849.21	844.36	4.85	RP5347-078	AS5347-076	R5347-078	841.95	843.53	17.00	9.29%	12	RCP	
R5347-083	235+45	E_Washington	RT 2	INLET	848.82	845.12	3.7	RP5347-080	R5347-079	R5347-080	844.68	844.72	7.00	0.57%	12		
<b>SITE 25 (BALDWIN)</b>																	
R5445-094	260+65	E_Washington	RT 5	INLET	848.83	844.77	4.06	RP5445-095	R5445-094	R5445-095	844.78	844.45	9.00	-3.67%	12	RCP	
								RP5445-094	AS5445-092	R5445-094	843.13	844.77	12.00	13.67%	12	RCP	
<b>SITE 26 (FIRST)</b>																	
R5542-048	286+40	E_Washington	LT 12	INLET	856.69	851.62	5.07	RP5542-048	R5542-047	R5542-048	851.62	851.92	10.00	3.00%	12	RCP	
R5542-047	286+40	E_Washington	LT 22	INLET	856.69	851.62	5.07	RP5542-047	AS5542-046	R5542-047	851.49	851.62	7.00	1.86%	12	RCP	
<b>SITE 28 (MILWAUKEE)</b>																	
R5839-116	330+63	E_Washington	RT 10	INLET	860.94	850.93	10.01	RP5839-114	R5839-116	IN5839-114	851.09	851.20	15.00	0.73%	18	RCP	
R5839-115	330+64	E_Washington	RT 18	INLET	860.99	850.73	10.26	RP5839-116	R5839-115	R5839-116	850.73	850.93	8.00	2.50%	18	RCP	
								RP5839-115	AS5839-096	R5839-115	850.69	850.73	8.00	0.50%	18	RCP	
<b>SITE 29 (MARQUETTE)</b>																	
R5937-068	352+20	E_Washington	LT 8	INLET	852.48	845.032	7.448	RP5937-069	R5937-068	R5937-069	848.03	848.37	10.00	3.38%	12	RCP	
R5937-069	352+09	E_Washington	LT 7	INLET	852.47	848.37	4.1	RP5938-103	R5937-067	R5938-103	847.55	848.15	8.00	7.50%	12	RCP	
R5938-103	352+14	E_Washington	RT 10	INLET	852.75	848.15	4.6	RP5937-067	CB5938-091	R5937-067	844.38	844.50	6.00	2.00%	24	RCP	
R5937-067	352+24	E_Washington	RT 10	INLET	852.75	844.5	8.25	RP5937-068	R5937-067	R5937-068	844.50	845.03	18.00	2.94%	18	RCP	
								RP5937-070	IN5937-068	R5937-070	845.08	845.08	5.00	0.00%	18	RCP	
<b>SITE 30 (MELVIN)</b>																	
R6036-068	376+67	E_Washington	RT 6	INLET	881.39	874.59	6.80	RP6035-023	R6036-069	R6035-023	874.85	875.05	6.00	3.33%	24	RCP	
R6036-069	376+67	E_Washington	LT 1	INLET	881.25	874.85	6.40	RP6036-069	R6036-068	R6036-069	874.59	874.85	8.00	3.25%	24	RCP	
								RP6036-068	IN6036-067	R6036-068	874.19	874.59	16.00	2.50%	24	RCP	
<b>SITE 31 (FAIROAKS)</b>																	
R6134-028	395+29.37	E_Washington	LT 12.1	INLET	879.69	875.44	4.25	RP6134-029	R6134-028	IN6134-029	875.44	875.48	7.00	0.57%	12	RCP	
								RP6134-028	IN6134-027	R6134-028	875.40	875.44	9.00	0.44%	12	RCP	
<b>SITE 33 (ANDERSON)</b>																	
R6231-031	20+69	Anderson	RT 28	INLET	854.94	852.66	2.28	RP6231-031	R6231-030	R6231-031	852.63	852.66	4.00	0.75%	15	RCP	
R6231-030	20+65	Anderson	RT 28	INLET	854.93	852.18	2.75	RP6231-030	AS6231-029	R6231-030	852.00	852.18	11.00	1.66%	15	RCP	
								RP6231-034	AS6231-029	IN6231-034	851.23	851.99	153.00	0.50%	27	RCP	
<b>SITE 36 (PORTAGE)</b>																	
R6529-043	454+31	E_Washington	LT 54	INLET	869.06	863.76	5.30	RP6529-043	R6529-042	R6529-043	863.65	863.76	12.00	0.92%	12	RCP	
R6529-042	454+42	E_Washington	LT 55	INLET	869.05	863.65	5.40	RP6529-042	AS6529-038	R6529-042	862.14	863.70	33.00	4.73%	12	RCP	
<b>SITE 37 (THIERER)</b>																	
								RP6529-035	IN6529-034	IN6529-035	862.18	862.25	15.00	0.47%	12	RCP	
								RP6529-054	IN6529-034	CB6529-054	862.85	863.22	73.00	0.51%	12	RCP	
<b>STORM PIPE ABONDONMENT</b>																	
								ABANDON FROM	ABANDON TO	LENGTH (FT)	SIZE (IN)	TYPE	NOTES				
<b>SITE 24 (PATERSON)</b>																	
								A5347-083	AS5347-081	37	12	RCP	AS5347-081 SEAL 12" PIPE				

PLAN REVISION 9	1/26/24	CTL
REVISION	DATE	BY
MARK	DESIGNED BY: STRAND	DATE: 2024-02-01
		Scale: 1"=20 FT

60631225P  
 CITY OF MADISON, DANE COUNTY, WI  
 CONTRACT NO: 60631225C



60631225P  
 P31E-E

REVISED 1/26/24 CTL

# SANITARY SEWER SCHEDULE



REVISED 02/19/2024 VTC

## PROPOSED SANITARY STRUCTURES

STRUC. NO	STATION	LOCATION (OFFSET)	TYPE/CASTING	TOP OF CASTING	E.I	DEPTH	NOTES
<b>SITE 1 - JUNCTION ROAD (ALIGNMENT PNR)</b>							
SAS#1	4+57.84	LT 11.58	4-FT/J-S	1071.69	1066.7	5.04	PRIVATE
SAS#2	2+04.71	LT 7.42	4-FT/J-S	1073.95	1068.00	5.95	PRIVATE
ASAS101	4+82.96	LT 0.96	EX. MH	1072.33	1061.9	10.44	ADJUSTING MH COVER SPECIAL; RECONSTRUCT FLOWLINES AND BENCH AS REQUIRED; SANITARY SEWER TAP REQ'D
<b>SITE 43 - SUN PRAIRIE PARK AND RIDE</b>							
SAS#4301	-	-	4-FT/J-S		947.44		PRIVATE
C4301	-	-	CONNECTION		939.96		CONCRETE COLLARS FOR PIPE REQ'D
<b>SITE 34 - EAST WASHINGTON AVENUE AT MENDOTA STREET (ALIGNMENT WA)</b>							
SAS#3	431+12.29	LT 37.633	5-FT/J-S	886.15	878.19	7.96	WASTEWATER CONTROL REQ'D; SANITARY SEWER INTERNAL CHIMNEY SEAL REQ'D; OFFSET CASTING

## PROPOSED SANITARY PIPES

PIPE NO.	FROM (DISCH.)	TO (INLET)	DISCH. E.I.	INLET E.I.	PLAN (PAY) LGTH (FT)	PIPE LGTH (FT)	SLOPE %	PIPE SIZE (IN)	PIPE TYPE	NOTES
<b>SITE 1 - JUNCTION ROAD</b>										
PS-103	SAS#2	COMFORT STATION	1068	1073.69	65	64.7	8.54%	6	PVC	PRIVATE
PS-102	SAS#1	SAS#2	1066.65	1067.9	248	247.1	0.50%	8	PVC	PRIVATE
PS-101	ASAS101	SAS#1	1066.4	1066.55	26	25.5	0.50%	8	PVC	PRIVATE, 8.89 V.F. OUTSIDE DROP REQ'D, OUTSIDE DROP IS A BID ITEM PER V.F.
<b>SITE 43 - SUN PRAIRIE PARK AND RIDE</b>										
PS-4301	22.5 DEGREE BEND	COMFORT STATION	942.76	943.06	12	11.8	2.50%	6	PVC	PRIVATE
PS-4302	SAS#4301	22.5 DEGREE BEND	940.66	942.76	84	83.1	2.50%	6	PVC	PRIVATE
PS-4303	C4301	SAS#4301	939.96	940.56	24	24.0	2.50%	6	PVC	PRIVATE
<b>SITE 34 - EAST WASHINGTON AVENUE AT MENDOTA STREET (ALIGNMENT WA)</b>										
SAN LATERAL	SAS#3	-	878.52	-	37	37	-	6	PVC	

## PIPE REMOVALS AND ABANDONMENTS

DOWNSTREAM	UPSTREAM	PIPE SIZE (IN)	PIPE LGTH (FT)	VOLUME (CY)	NOTES
<b>SITE 34 - EAST WASHINGTON AVENUE AT MENDOTA STREET</b>					
431'WA'+12.29	430'WA'+77.80	8	34	0.44	ABANDON WITH SLURRY

## STRUCTURE REMOVALS AND ABANDONMENTS

STRUC. NO	STATION	LOCATION (OFFSET)	RIM	E.I	DEPTH	NOTES
<b>SITE 34 - EAST WASHINGTON AVENUE AT MENDOTA STREET</b>						
SAS#6331-014	430'WA'+77.80	37.50 LT	886.35	878.66	7.69	

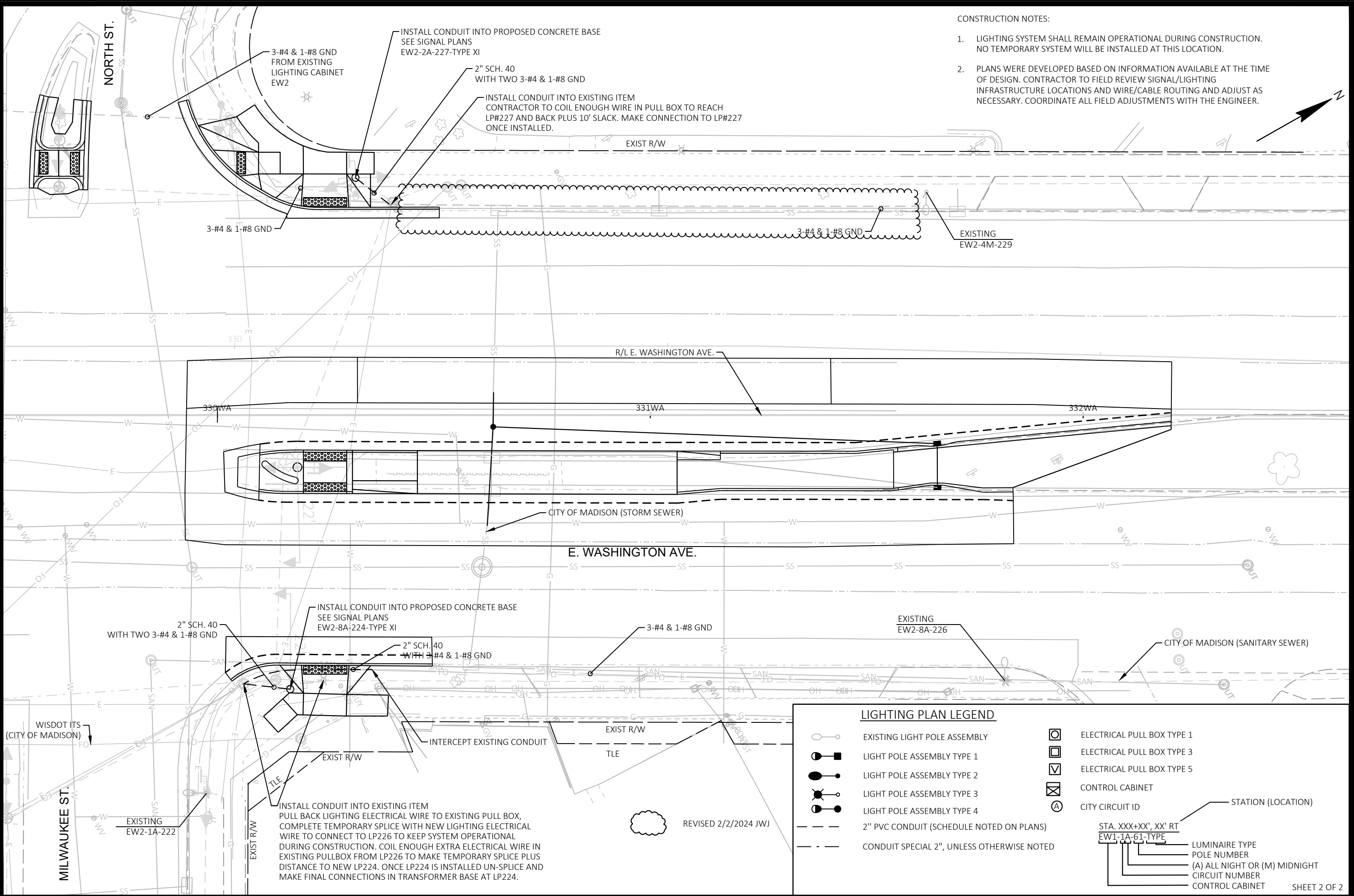
## Adjust Sanitary Structures

GIS NAME	STATION	LOCATION (OFFSET)	EX. RIM ELEV	PROP. RIM ELEV	OWNER	NOTE
<b>SITE 8 - WHITNEY WAY AT REGENT STREET</b>						
SAS3353-026	60+17.62	58.87 LT	973.83	973.83	MAD	WEST MH
SAS3453-005	60+17.98	56.82 RT	972.26	972.26	MAD	EAST MH
<b>SITE 44 - SHEBOYGAN &amp; WHITNEY WAY ROADWAY IMPROVEMENTS</b>						
SAS3450-005	79+26.11	62.01 RT	935.29	935.29	MAD	NORTH MH
SAS3451-003	78+64.62	55.34 RT	938.41	938.41	MAD	SOUTH MH
<b>SITE 45 - CAMPUS DRIVE ROADWAY WORK (EB)</b>						
MH02-509	1004+41.53	11.17 RT	878.65	878.65	MMSD	WEST MH
MH02-508	1008+07.67	31.29 RT	877.56	877.56	MMSD	EAST MH
<b>SITE 17 - UNIVERSITY AVENUE AT EAST CAMPUS MALL</b>						
SAS4750-012	833+35.51	36.07 LT	868.16	868.16	MAD	
<b>SITE 9 - SHEBOYGAN AVENUE AT EAU CLAIRE AVENUE</b>						
SAS3450-018	13+01.68	30.68 RT	946.78	946.41	MAD	
<b>SITE 20 - STATE STREET - GORHAM STEET</b>						
SANST006063	302+13.50	5.83 LT	875.26	875.26	MAD	
<b>SITE 22 - CAPITOL SQUARE - MAIN STREET AT MARTLIN LUTHER KING BOULEVARD</b>						
SANST021032	510+27.39	10.92 RT	920.87	920.99	MAD	WEST MH
SANST009775	512+09.01	35.66 RT	918.51	918.51	MAD	EAST MH
<b>SITE 24 - EAST WASHINGTON AVENUE AT PATERSON STREET</b>						
SANST005861	233+16.23	15.88 RT	850.10	850.19	MAD	
<b>SITE 25 - EAST WASHINGTON AVENUE AT BALDWIN STREET</b>						
SANST006017	262+65.87	39.64 LT	849.47	849.47	MAD	WB OUTSIDE
SANST006019	262+62.50	10.01 RT	850.03	850.05	MAD	MEDIAN
<b>SITE 27 - EAST WASHINGTON AVENUE AT FOURTH STREET</b>						
MH06-122	308+72.49	6.47 RT	864.89	864.53	MMSD	
<b>SITE 28 - EAST WASHINGTON AVENUE AT MILWAUKEE-NORTH STREET</b>						
SANST013947	326+89.33	43.56 LT	861.53	861.54	MAD	WEST MH
SANST014236	327+82.62	42.36 LT	861.76	861.94	MAD	EAST MH
<b>SITE 38 - EAST WASHINGTON AVENUE AT INDEPENDENCE LANE</b>						
SANST016526	478+09.29	90.72 LT	882.03	882.04	MAD	INDEPENDENCE LN
SANST017682	476+72.67	76.86 LT	881.11	880.26	MAD	WASHINGTON AVE
<b>SITE 50 - MENDOTA STREET BUS/BIKE CONNECTOR ROADWAY WORK</b>						
SANST017706	501+27.55	15.95 LT	868.10	867.79	MAD	

NOTE: CONTRACTOR SHALL NOTIFY RAY SCHNEIDER AT (608)347-3628, RAYS@MADSEWER.ORG 5 DAYS PRIOR TO ADJUSTING MMSD MANHOLES TO ARRANGE FOR INSPECTION. CONTRACTOR SHALL ADHERE TO ALL MMSD ADJUSTMENT REQUIREMENTS.

60631225P  
 CITY OF MADISON, DANE COUNTY, WI  
 CONTRACT NO: 60631225C  
 STRUCTURES TABLE  
 BUS RAPID TRANSIT  
 CITY OF MADISON  
 60631225P  
 P47-E

PLAN REVISION 9 02/19/24 VTC  
 PLAN REVISION 4 05/31/23 VTC  
 REVISION DATE BY  
 MARK 60631225P  
 Designed By: AECOM Date: 2024-02-19  
 Scale: 1"=20 FT  
 FILE NAME: C:\P\WORKING\AECOM\_DS20\_NA\_2019\VINCE.CHRISTENSEN@AECOM.COM\DM86348\050305A\_PN.DWG  
 LAYOUT NAME - 050309.plt  
 LAST PLOT DATE - 2024-02-19



CONSTRUCTION NOTES:

1. LIGHTING SYSTEM SHALL REMAIN OPERATIONAL DURING CONSTRUCTION. NO TEMPORARY SYSTEM WILL BE INSTALLED AT THIS LOCATION.
2. PLANS WERE DEVELOPED BASED ON INFORMATION AVAILABLE AT THE TIME OF DESIGN. CONTRACTOR TO FIELD REVIEW SIGNAL/LIGHTING INFRASTRUCTURE LOCATIONS AND WIRE/CABLE ROUTING AND ADJUST AS NECESSARY. COORDINATE ALL FIELD ADJUSTMENTS WITH THE ENGINEER.

LIGHTING PLAN LEGEND

- EXISTING LIGHT POLE ASSEMBLY
- LIGHT POLE ASSEMBLY TYPE 1
- LIGHT POLE ASSEMBLY TYPE 2
- LIGHT POLE ASSEMBLY TYPE 3
- LIGHT POLE ASSEMBLY TYPE 4
- 2" PVC CONDUIT (SCHEDULE NOTED ON PLANS)
- CONDUIT SPECIAL 2", UNLESS OTHERWISE NOTED
- ELECTRICAL PULL BOX TYPE 1
- ELECTRICAL PULL BOX TYPE 3
- ELECTRICAL PULL BOX TYPE 5
- CONTROL CABINET
- CITY CIRCUIT ID
- STATION (LOCATION)
- LUMINAIRE TYPE
- POLE NUMBER
- (A) ALL NIGHT OR (M) MIDNIGHT CIRCUIT NUMBER
- CONTROL CABINET

60631225P

CITY OF MADISON, DANE COUNTY, WI

CONTRACT NO: 60631225C

60631225P

L-25B

PLAN REVISION 9

DATE 2/2/2024

REVISION

DATE 2024-02-02

Scale: 1"=20 FT

MARK

Designed By: AECOM

60631225P

FILE NAME: C:\P\WORKING\AECOM\_DS20\_NA\_2019\JAMES.JENNING@AECOM.COM\DM5836348\023625B\_LP.DWG

LAYOUT NAME - 023625B\_LP

LAST PLOT DATE - 2024-02-02

CITY OF MADISON WISCONSIN

60631225P

SHEET 2 OF 2



STATION LOCATION: EAST WASHINGTON AVENUE AT MILWAUKEE STREET

SCC CODE	ITEM NUMBER	DESCRIPTION	UNITS	QUANTITY
40.01	204.0100	Removing Concrete Pavement	SY	1,690
40.01	204.0150	Removing Curb & Gutter	LF	170
40.01	204.0155	Removing Concrete Sidewalk	SY	200
40.02	204.0220	Removing Inlets	EACH	2
40.02	204.0245.03	Removing Storm Sewer - 18 inch	LF	31
40.01	205.0100	Excavation Common	CY	150
40.07	209.0300.S	Backfill Course Aggregate Size No. 1	CY	2
10.02	305.0120	Base Aggregate Dense 1 1/4-Inch	TON	1
10.03	305.0120	Base Aggregate Dense 1 1/4-Inch	TON	42
20.01	305.0120	Base Aggregate Dense 1 1/4-Inch	TON	44
40.06	305.0120	Base Aggregate Dense 1 1/4-Inch	TON	85
40.07	305.0120	Base Aggregate Dense 1 1/4-Inch	TON	50
10.02	305.0130	Base Aggregate Dense 3-Inch	TON	3
10.03	305.0130	Base Aggregate Dense 3-Inch	TON	120
20.01	305.0130	Base Aggregate Dense 3-Inch	TON	13
40.07	305.0130	Base Aggregate Dense 3-Inch	TON	150
10.02	405.0100	Coloring Concrete WisDOT Red	CY	84
40.07	405.1000	Stamping Colored Concrete	CY	21
40.07	415.0100	Concrete Pavement 10-Inch	SY	130
10.02	415.0110	Concrete Pavement 11-Inch	SY	580
10.03	415.0110	Concrete Pavement 11-Inch	SY	550
40.07	415.0110	Concrete Pavement 11-Inch	SY	270
10.02	415.4100	Concrete Pavement Joint Filling	SY	580
10.03	415.4100	Concrete Pavement Joint Filling	SY	550
40.07	415.4100	Concrete Pavement Joint Filling	SY	399
10.02	416.0610	Drilled Tie Bars	EACH	192
10.03	416.0610	Drilled Tie Bars	EACH	176
40.07	416.0610	Drilled Tie Bars	EACH	112
10.02	416.0620	Drilled Dowel Bars	EACH	32
10.03	416.0620	Drilled Dowel Bars	EACH	35
40.07	416.0620	Drilled Dowel Bars	EACH	55
40.02	520.8000	Concrete Collars for Pipe	EACH	3
40.07	601.0205	Concrete Gutter 24-Inch	LF	320
40.07	601.0409	Concrete Curb & Gutter 30-Inch Type A	LF	190
40.07	601.0452	Concrete Curb & Gutter Integral 30-Inch Type D	LF	310
40.07	601.0454	Concrete Curb & Gutter Integral 30-Inch Type J	LF	120
40.07	601.0600	Concrete Curb Pedestrian	LF	37
40.06	602.0410	Concrete Sidewalk 5-Inch	SF	600
40.06	602.0420	Concrete Sidewalk 7-Inch	SF	2,920
40.06	602.0515	Curb Ramp Detectable Warning Field Natural Patina	SF	200
40.02	608.0412	Storm Sewer Pipe Reinforced Concrete Class IV 12-Inch	LF	283
40.02	608.0415	Storm Sewer Pipe Reinforced Concrete Class IV 15-Inch	LF	51
40.02	608.0418	Storm Sewer Pipe Reinforced Concrete Class IV 18-Inch	LF	31
40.02	611.0535	Manhole Covers Type J-Special	EACH	1
40.02	611.0624	Inlet Covers Type H	EACH	4
40.02	611.0627	Inlet Covers Type HM	EACH	1
40.02	611.2004	Manholes 4-FT Diameter	EACH	1
40.02	611.3230	Inlets 2x3-FT	EACH	5
40.02	611.8115	Adjusting Inlet Covers	EACH	2
40.02	612.0106	Pipe Underdrain 6-Inch	LF	60
40.07	620.0300	Concrete Median Sloped Nose	SF	170
10.03	624.0100	Water	MGAL	1
20.01	624.0100	Water	MGAL	1
40.06	624.0100	Water	MGAL	2
40.07	624.0100	Water	MGAL	1
40.06	625.0105	Topsoil	CY	9

STATION LOCATION: EAST WASHINGTON AVENUE AT MILWAUKEE STREET CONTINUED

SCC CODE	ITEM NUMBER	DESCRIPTION	UNITS	QUANTITY
40.08	628.1905	Mobilizations Erosion Control	EACH	1
40.08	628.1910	Mobilizations Emergency Erosion Control	EACH	1
40.06	628.2006	Erosion Mat Urban Class I Type A	SY	160
40.06	628.6505	Soil Stabilizer Type A	ACRE	0.03
40.02	628.7015	Inlet Protection Type C	EACH	14
40.06	629.0210	Fertilizer Type B	CWT	0.10
40.06	630.0500	Seed Water	MGAL	1
40.06	645.0112	Geotextile Type DF Schedule B	SY	33
40.07	650.5500	Construction Staking Curb Gutter and Curb & Gutter	LF	220
40.07	650.7000	Construction Staking Concrete Pavement	LF	550
40.06	650.9000	Construction Staking Curb Ramps	EACH	12
20.01	652.0615	Conduit Special 3-Inch	LF	133
20.01	656.0200.326	Electrical Service Meter Breaker Pedestal (Milwaukee St. EB)	LS	1
20.01	656.0200.327	Electrical Service Meter Breaker Pedestal (Milwaukee St. WB)	LS	1
20.01	656.0500.327	Electrical Service Breaker Disconnect Box (Milwaukee St EB/WB)	LS	2
40.01	690.0250	Sawing Concrete	LF	1,500
40.07	715.0720	Incentive Compressive Strength Concrete Pavement	DOL	38
40.06	SPV.0060.001	Construction Staking Sidewalk	EACH	1
20.01	SPV.0060.301	Platform Electrical Cabinet	EACH	2
20.01	SPV.0060.302	Platform Communication Cabinet	EACH	2
20.01	SPV.0060.307	Snow Melt System Shelter Type A5	EACH	2
20.01	SPV.0060.316	Shelter Photovoltaic System	EACH	2
20.01	SPV.0060.405	Reinforced Concrete Platform Type A5	EACH	2
20.01	SPV.0060.421	Platform Shelter Type A5	EACH	2
40.06	SPV.0060.501	Tree Protection	EACH	1
40.06	SPV.0060.507.01	Perennials & Native Grasses (Butterfly Milkweed, Potted, 1 GAL)	EACH	6
40.06	SPV.0060.507.02	Perennials & Native Grasses (Sand Coreopsis, Potted, 1 GAL)	EACH	6
40.06	SPV.0060.507.03	Perennials & Native Grasses (Purple Prairie Clover, Potted, 1 GAL)	EACH	8
40.06	SPV.0060.507.04	Perennials & Native Grasses (Purple Coneflower, Potted, 1 GAL)	EACH	6
40.06	SPV.0060.507.05	Perennials & Native Grasses (Blazing Star, Potted, 1 GAL)	EACH	14
40.06	SPV.0060.507.08	Perennials & Native Grasses (Black-eyed Susan, Potted, 1 GAL)	EACH	12
40.06	SPV.0060.507.11	Perennials & Native Grasses (Prairie Dropseed, Potted, 1 GAL)	EACH	4
40.06	SPV.0060.507.12	Perennials & Native Grasses (Canada Anemone, Potted, 1 GAL)	EACH	6
40.06	SPV.0060.507.13	Perennials & Native Grasses (Sky Blue Aster, Potted, 1 GAL)	EACH	6
40.06	SPV.0060.507.14	Perennials & Native Grasses (Prairie Smoke, Potted, 1 GAL)	EACH	12
40.06	SPV.0060.507.15	Perennials & Native Grasses (June Grass, Potted, 1 GAL)	EACH	8
40.06	SPV.0060.507.16	Perennials & Native Grasses (Jacob's Ladder, Potted, 1 GAL)	EACH	12
40.02	SPV.0060.606	Storm Sewer Tap	EACH	1
40.02	SPV.0060.613	Adjust Water Valve Box	EACH	1
40.02	SPV.0060.623	Remove Irrigation System	EACH	2
40.06	SPV.0085.501	Seeding	LB	3
40.07	SPV.0090.003	Concrete Curb & Gutter 24-Inch Type H Special	LF	43
40.07	SPV.0090.004	Concrete Curb & Gutter Integral 24-Inch Special	LF	140
40.07	SPV.0090.006	Concrete Curb Extension 6-Inch	LF	60
40.07	SPV.0090.007	Concrete Curb Extension 24-Inch	LF	20
40.07	SPV.0090.011	Docking Guide Strip	LF	159
20.01	SPV.0090.302	Electrical Wire Lighting 4/0 AWG	LF	501
40.06	SPV.0090.401	Pedestrian Handrail	LF	170
40.02	SPV.0090.602	PVC Pipe 8-inch	LF	202
40.06	SPV.0165.401	Concrete Sloped Walkway	SF	300

REVISED 2/1/24 CTL

2/1/2024	CTL
4/26/2023	ALW
2/22/2023	DIC
11/14/2022	DIC
	BY
	DATE
	REVISION
	Mark
	Designed By: STRAND
	Date: 2/5/2024
	Scale: NTS
	60631225P

MISCELLANEOUS QUANTITIES  
 BUS RAPID TRANSIT  
 CITY OF MADISON  
 60631225P  
 CONTRACT NO: 60631225C  
 CITY OF MADISON, DANE COUNTY, WI



60631225P  
 MQ11-E

C:\OneDrive\AECOM\City of Madison BRT Quantities - Cost Quantities\Madison BRT MQ Plan Sheets.pptx  
 LAST PLOT DATE: 2/5/2024



LIGHTING CONDUIT & ELECTRICAL WIRE

SECTION	LOC.	TO	LOC.	LINEAR DISTANCE	NUMBER OF CONDUITS	652.0225 CONDUIT RIGID CONDUIT NONMETALLIC SCHEDULE 40			652.0335 CONDUIT RIGID CONDUIT NONMETALLIC SCHEDULE 80			652.0605 CONDUIT RIGID CONDUIT SPECIAL			IN CONDUIT RUN		IN LIGHT POLE		SPV.0090.202	655.0615	655.0620	655.0630
						2-INCH L.F.	3-INCH L.F.	2-INCH L.F.	SLACK LF	WIRE	NUMBER OF WIRES (INCLUDING GROUND WIRE)	LENGTH OF WIRE IN POLE	NUMBER OF WIRES (INCLUDING GROUND WIRE)	ELECTRICAL WIRE LIGHTING 14-3 UF GROUNDED EACH	ELECTRICAL WIRE LIGHTING 10 AWG L.F.	ELECTRICAL WIRE LIGHTING 8 AWG L.F.	ELECTRICAL WIRE LIGHTING 4 AWG L.F.					
						2	3	2	WIRE	WIRES	WIRES	WIRES	WIRES	WIRES	WIRES	WIRES	WIRES					
						2	3	2	WIRE	WIRES	WIRES	WIRES	WIRES	WIRES	WIRES	WIRES	WIRES					
State/Gorham	5220		6744	43	1	22	-	-	6	7	38	1			38	-	196	147				
	6744		6743	84	1	56	-	-	6	7					-	-	360	270				
				-	-	-	-	-	-	-	-	-	-	-	-	-	-	-	-	-	-	-
					SECTION SUBTOTAL	78	0	0							38	0	556	417				
Johnson/State	KIOSK		LPB1	35	3	105	-	-	23	25					-	232	1044	174				
	LPB1		46	4	1	4	-	-	18	7	19	2			38	44	110	-				
	LPB1		LPB2	28	3	84	-	-	18	25					-	184	828	138				
	LPB2		47	4	1	4	-	-	18	7	19	2			38	44	110	-				
	LPB2		LPB3	29	3	87	-	-	30	25					-	236	1062	177				
	LPB3		35	7	1	7	-	-	6	8	34	2			68	13	52	39				
	LPB3		EXPB4	26	3	78	-	-	18	25					-	176	792	132				
				-	-	-	-	-	30	-	-	-	-	-	-	-	-	-	-	-	-	-
					SECTION SUBTOTAL	369	0	0							144	929	3998	660				
W Main St- Martin Luther King Jr Blvd	EXPB1		2946	17	1	17	-	-	36	4	38	1			38	159	53	159				
					SECTION SUBTOTAL	17	0	0							38	159	53	159				
Paterson	61		LPB1	131	1	7	-	-	38	4					-	-	169	507				
	LPB1		65	110	1	14	-	-	18	4					-	-	128	384				
	LPB1		63	10	1	10	-	-	18	4	38	1			38	-	28	84				
	60		EX PB	132	1	4	-	-	47	4					-	-	179	537				
	EX PB		64	80	1	26	-	-	18	4					-	-	98	294				
	EX PB		62	5	1	5	-	-	18	8	38	1			38	-	46	138				
					SECTION SUBTOTAL	66	0	0							76	0	648	1944				
Baldwin	106		EX PB	128	1	0	-	-	18	4					-	-	146	438				
	EX PB		104	16	1	16	-	-	59	4	38	1			38	-	75	225				
	EX PB		EW3	90	1	20	-	-	23	4					-	-	113	339				
					SECTION SUBTOTAL	36	0	0							38	0	334	1002				
First	136		LPB1	137	1	10	-	-	18	4					-	-	155	465				
	LPB1		EX PB	35	1	35	-	-	30	4					-	-	65	195				
	EX PB		138A	30	1	0	-	-	32	4					-	-	62	186				
	LPB1		138	9	1	9	-	-	18	4	38	1			38	-	27	81				
	EW10		EX PB	42	1	0	-	-	23	4					-	-	65	195				
	EX PB		140	8	1	8	-	-	36	4	38	1			38	-	44	132				
	EX PB		142	316	1	13	-	-	18	4					-	-	334	1002				
				-	-	-	-	-	-	-	-	-	-	-	-	-	-	-	-	-	-	-
				-	-	-	-	-	-	-	-	-	-	-	-	-	-	-	-	-	-	-
					SECTION SUBTOTAL	75	0	0							76	0	752	2256				
Milwaukee/North	219		LPB1	100	1	8	-	-	18	4					-	-	118	354				
	LPB1		221	16	1	16	-	-	45	4	38	1			38	-	61	183				
	LPB1		EX PB-EW2	57	1	34	-	-	38	4					-	-	95	285				
	218		PB-220	156	1	16	-	-	38	4	38	1			38	-	194	582				
	PB		EX PB	-	1	28	-	-	-	-					-	-	-	-				
	EX PB		224	11	1	11	-	-	18	4	38	1			38	-	29	87				
	EX PB		226	177	1	30	-	-	39	4					-	-	216	648				
	229		EX PB - EX PB - EW2	261	-	-	-	-	62	4					-	-	323	969				
	EX PB		227	11	1	11	-	-	18	4	38	1			38	-	29	87				
					SECTION SUBTOTAL	154	0	0							152	0	1065	3195				
Marquette	EW3		EXPB	20	1	-	-	-	23	8					-	-	86	258				
	EXPB		EXPB	126	1	-	-	126	45	8					-	-	342	1026				
	EXPB		259	95	1	-	-	-	18	4					-	-	113	339				
	EXPB		BP04	97	1	-	-	-	32	4					-	-	129	387				
					SECTION SUBTOTAL	0	0	126							0	0	670	2010				
Melvin/Rethke	297		LPB1	46	1	4	-	-	18	4					-	-	64	192				
	LPB1		LPB2	46	1	46	-	-	30	4					-	-	76	228				
	LPB2		299	9	1	9	-	-	37	4	38	1			38	-	46	138				
	LPB2		301	70	1	5	-	-	18	4					-	-	88	264				
					SECTION SUBTOTAL	64	0	0							38	0	274	822				

60631225P

CITY OF MADISON, DANE COUNTY, WI

CONTRACT NO: 60631225C

MISCELLANEOUS QUANTITIES: EAST LIGHTING

BUS RAPID TRANSIT

CITY OF MADISON

60631225P

MQ-6L

REVISOR: JWW

DATE: 2/2/2024

SCALE: NTS

DESIGNED BY: AECOM

DATE: 2/2/2024

MARK: 90631225P

PLAN REVISION 9

REVISION DATE

AE 2/2/2024

BY

FILE NAME: C:\OneDrive\AECOM\City of Madison BRT Quantities - Cost Quantities\Madison BRT MQ Plan Sheets.pptx

LAST PLOT DATE: 2/2/2024

REVISED BY JWW 2/2/2024

